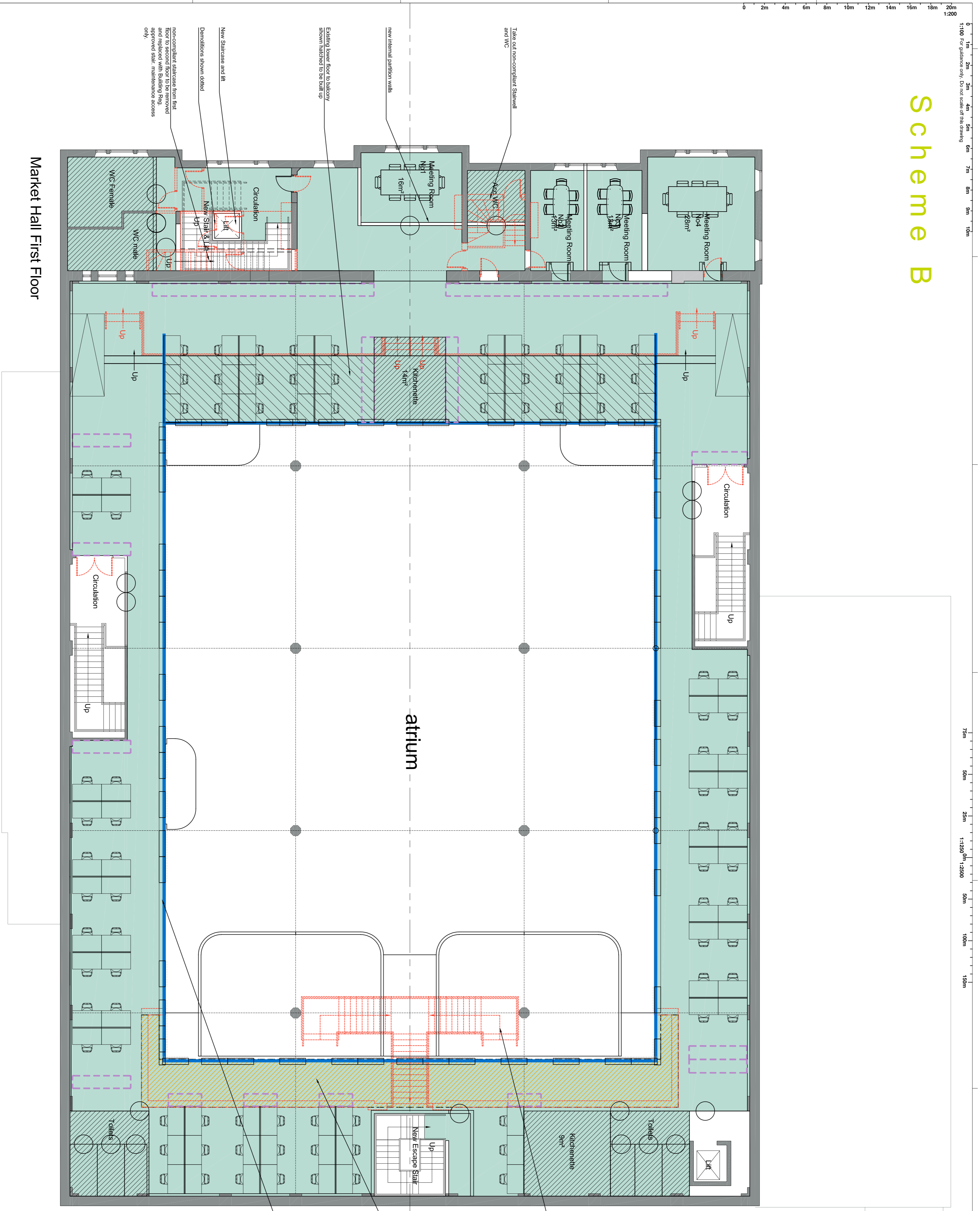
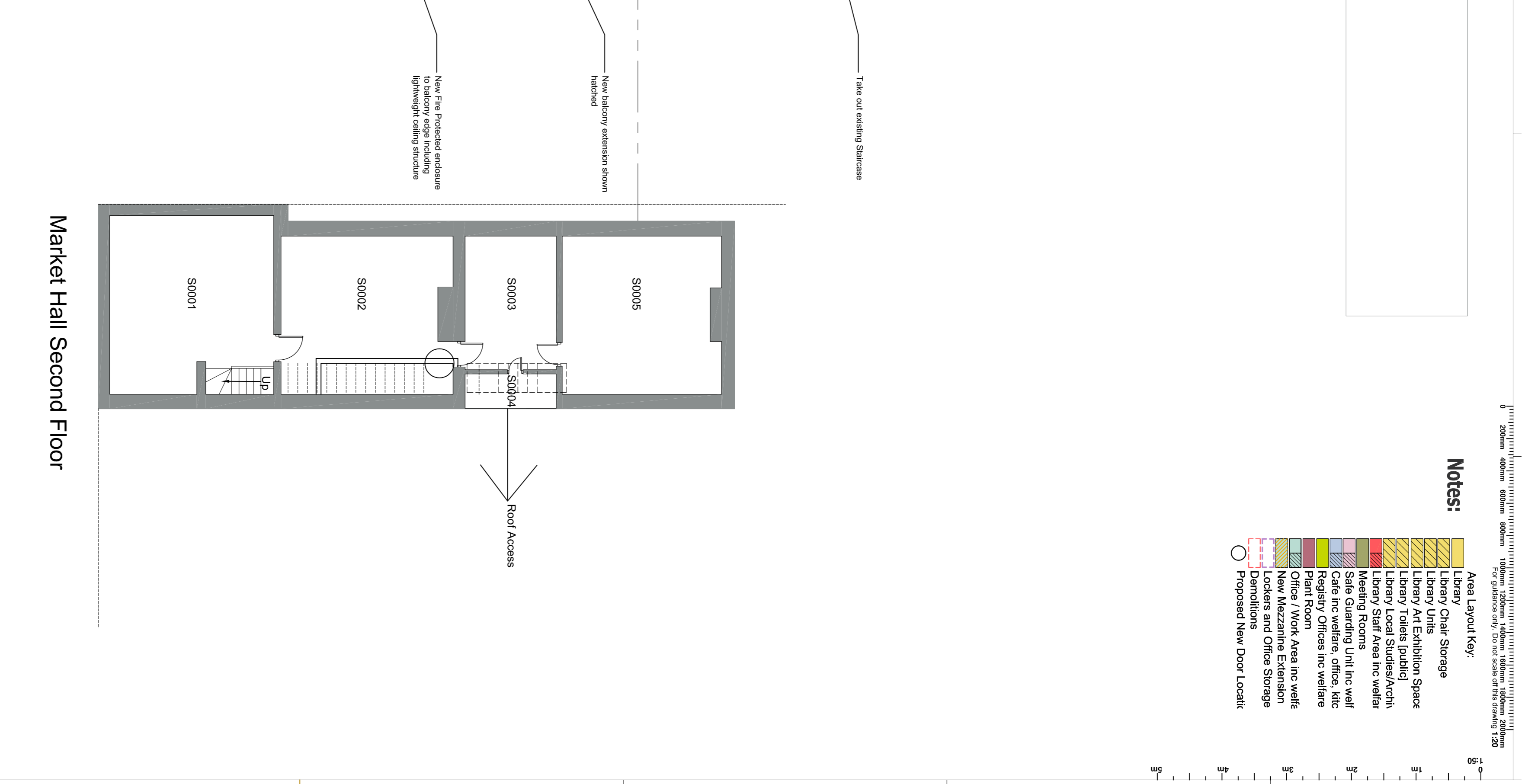


Scheme B

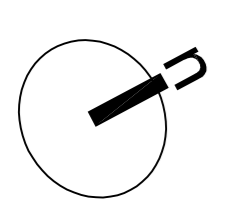


Market Hall First Floor



Market Hall Second Floor

- Notes:**
- Library Chair Storage
 - Library Units
 - Library Art Exhibition Space
 - Library Tools (Public)
 - Library Local Studies/Arch
 - Library Staff Area inc welfare
 - Staff Offices
 - Site office/ welfare office, lift
 - Cafe inc welfare office, lift
 - Registry Offices inc welfare
 - Plant Room
 - Office / Work Area inc well
 - New Mezzanine Extension
 - Lockers and Office Storage
 - Demolitions
 - Proposed New Door Localit
- Area Layout Key:**
- Library Chair Storage
 - Library Units
 - Library Art Exhibition Space
 - Library Tools (Public)
 - Library Local Studies/Arch
 - Library Staff Area inc welfare
 - Staff Offices
 - Site office/ welfare office, lift
 - Cafe inc welfare office, lift
 - Registry Offices inc welfare
 - Plant Room
 - Office / Work Area inc well
 - New Mezzanine Extension
 - Lockers and Office Storage
 - Demolitions
 - Proposed New Door Localit



10m

20m

entrust Inspiring Futures		Postal Address: Entrust Centre, Rushford, ST16 3TH	
Client / Project: Burton Upon Trent Market Hall		Project No: 56693	
Scheme: First / Second Floor Plan Scheme B		Date: Nov 2021	
Project Lead: MP		Project Manager: AT	
Scheme A		Scheme B	
Scheme C		Scheme D	

DATE/VERSION: 15/11/2021 / 1.0

PROPERTY SERVICES: ENTRUST CENTRE, RUSHFORD, ST16 3TH

PROJECT NO: 56693

SCHEME: A1

DATE: NOV 2021

SCHEME: SK005

entrust is not responsible for any errors or omissions in this drawing and its contents. The user of this drawing is advised to verify the information contained herein with the relevant authorities. entrust is not responsible for any errors or omissions in this drawing and its contents. The user of this drawing is advised to verify the information contained herein with the relevant authorities.