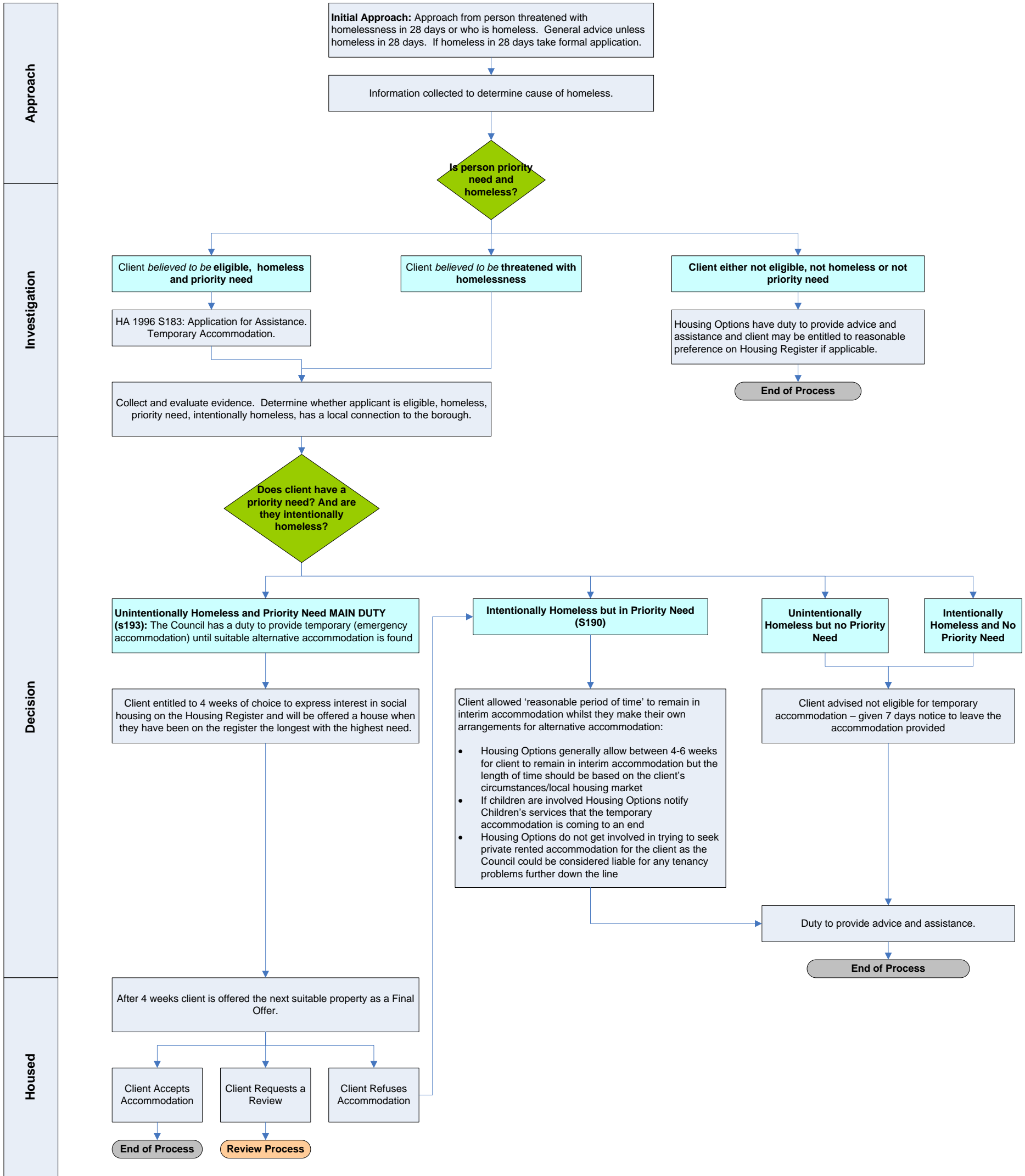
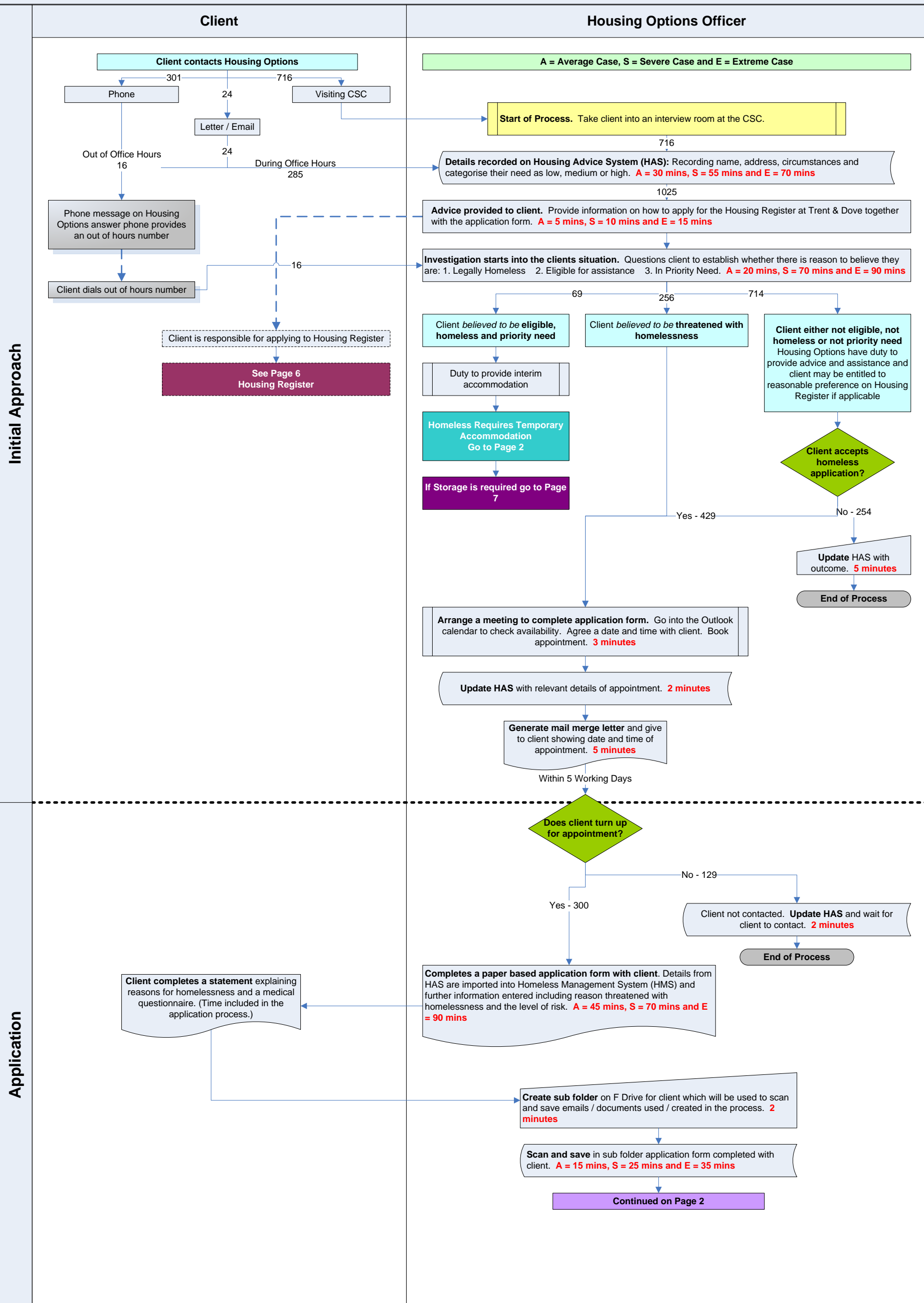


Overview

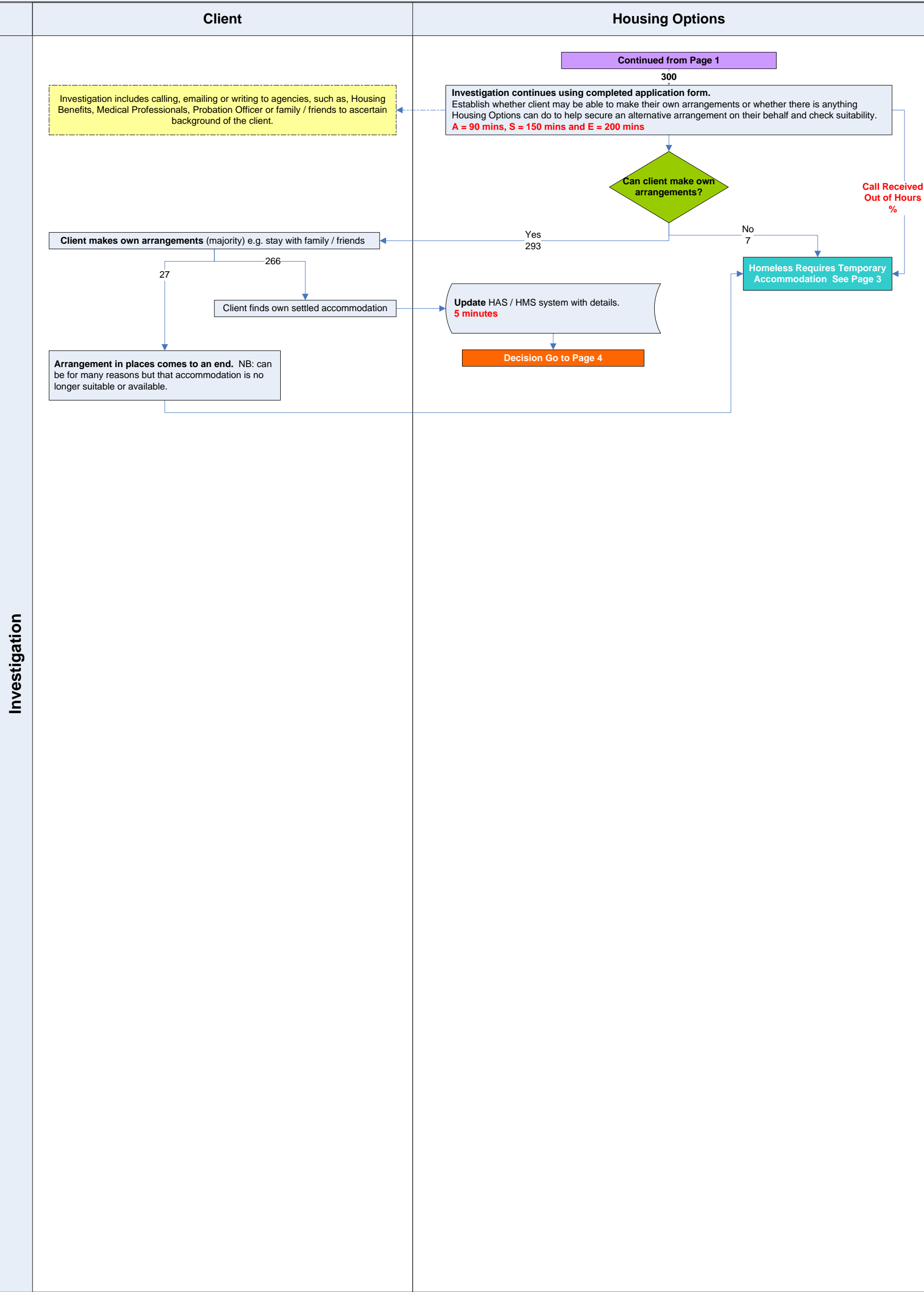
25 Days from Approach to Decision



Initial Approach to Housing Options (Page 1)

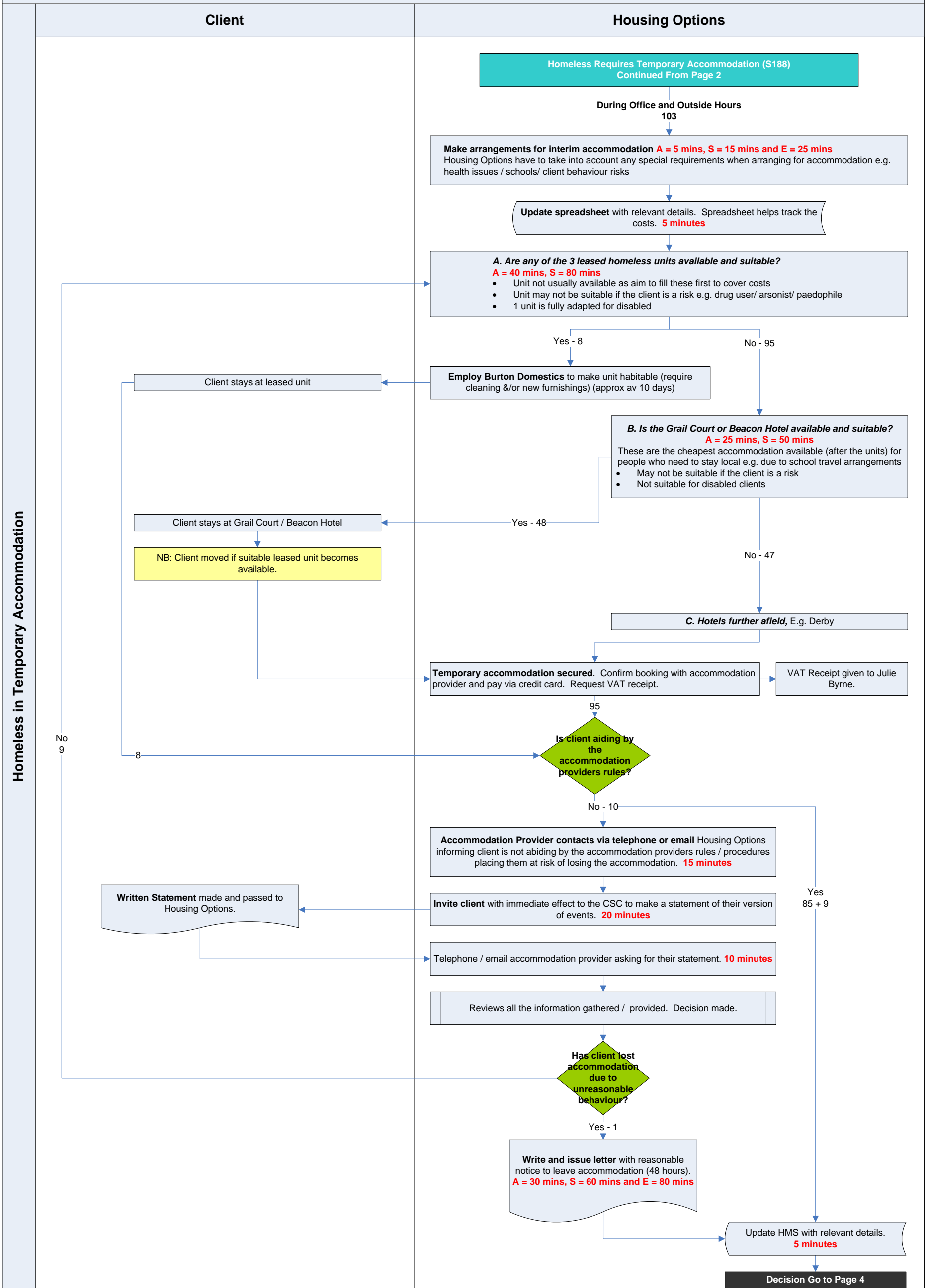


Initial Approach to Housing Options continued (Page 2)



Investigation

Homeless in Temporary Accommodation (Page 3)



Homeless in Temporary Accommodation

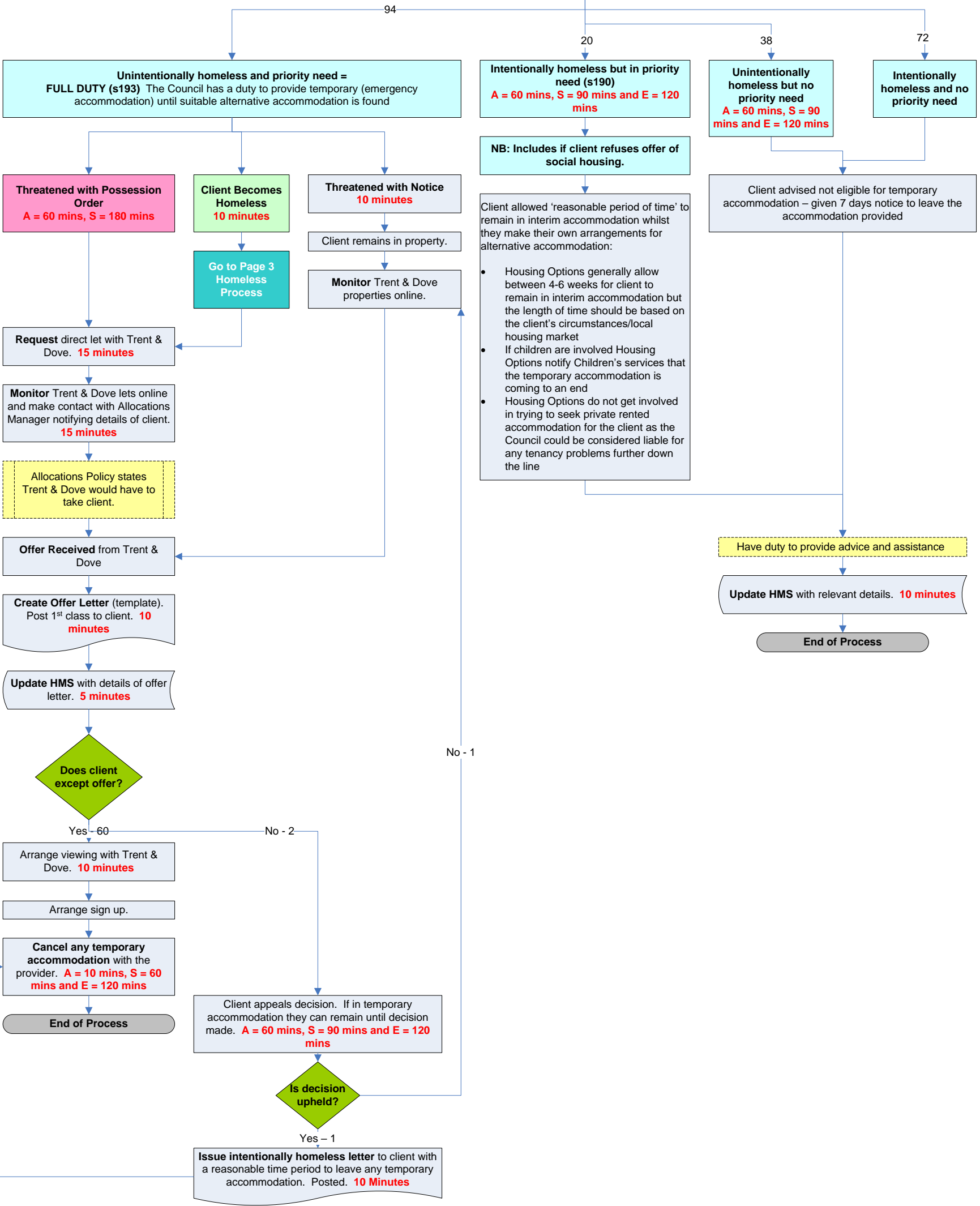
Housing Options

Decision Continued from Page 2 Made within 28 Days

Homelessness Investigation:
Whilst client is in interim accommodation, Housing Options investigate the client's case e.g. do they have any rights to property / income to pay rent arrears etc to come to decision on level of duty owed.
A = 150 mins, S = 300 mins and E = 360 Mins

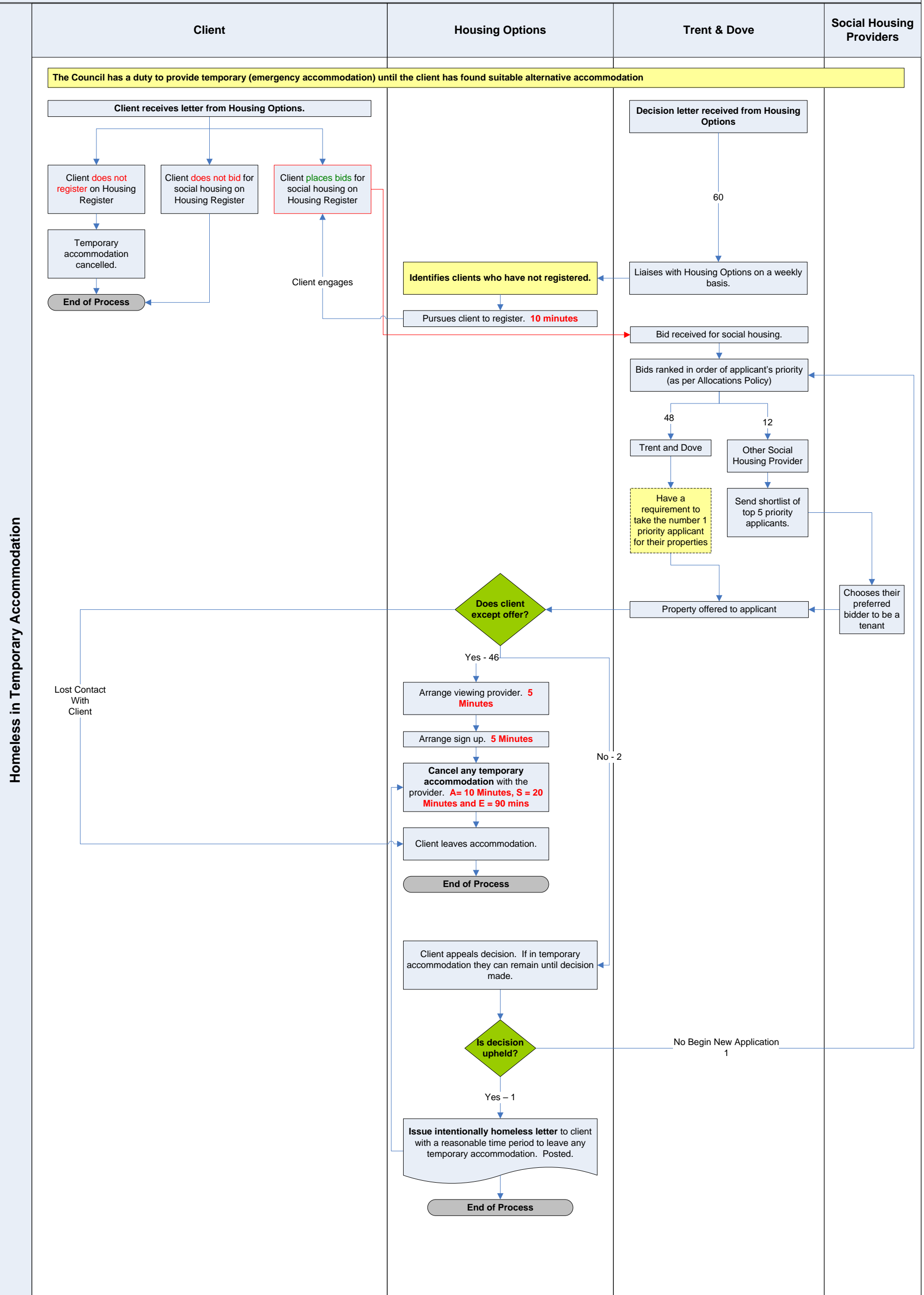
NB: Found Suitable Alternative Accommodation by time they get to the end of this process on this page = 32 (figure is based on average and rounding up). Only 62 go through to the next page.

DECISION
Does the client have a priority need? And are they intentionally homeless?



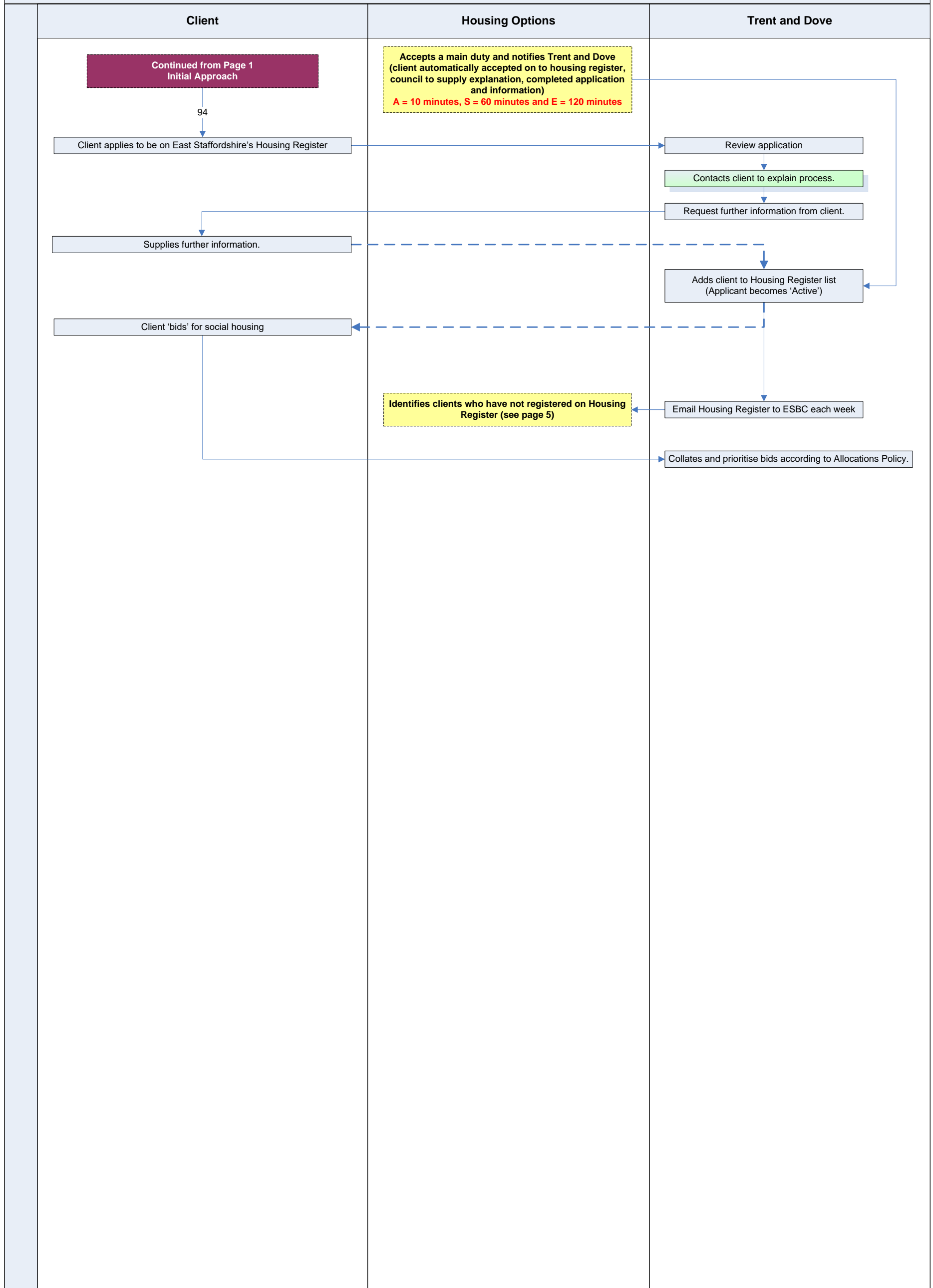
Threatened or Homeless

Decision: Unintentionally homeless and priority need = Full Duty (s193) (Page 5)



Homeless in Temporary Accommodation

Housing Register (Page 6)



Storage (Page 7)

