

2011 Census: Population and household estimates for East Staffordshire

The first release of data from the 2011 Census was published on 16th July 2012. There will be a second release between November 2012 and February 2013 and a third release between March and June 2013.

The source of all 2011 Census data is the Office for National Statistics Crown Copyright 2012. Please note the percentages throughout this report have been calculated using the 2011 rounded figures.

This first release provides statistics on the usual resident population down to a local authority level and is broken down by gender and 5 year age bands.

For 2011 Census purposes, a usual resident of the UK is anyone who, on census day, was in the UK and had stayed or intended to stay in the UK for a period of 12 months or more, or had a permanent UK address and was outside the UK and intended to be outside the UK for less than 12 months.

Figures may not add exactly because they have been rounded to the nearest 100.

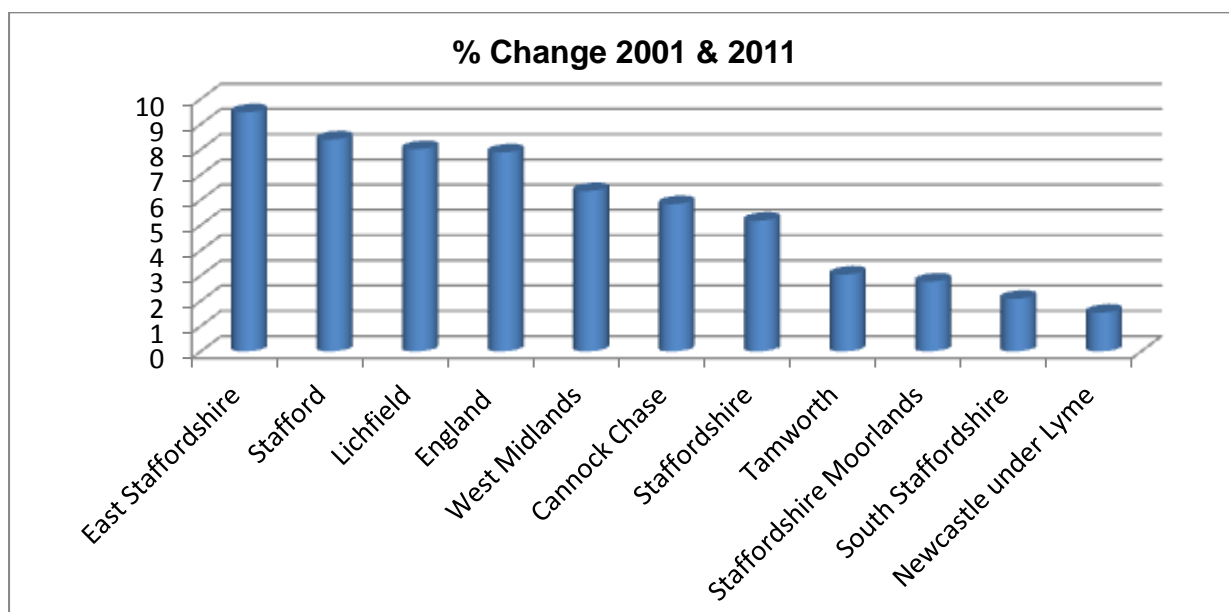
Table 1: 2011 Census – Resident Population by Area	
England and Wales	56,075,900
England	53,012,500
West Midlands	5,601,800
Staffordshire	848,500
Cannock Chase	97,500
East Staffordshire	113,600
Lichfield	100,700
Newcastle-under-Lyme	123,900
South Staffordshire	108,100
Stafford	130,800
Staffordshire Moorlands	97,100
Tamworth	76,800

East Staffordshire – Resident Population

As table 2 shows East Staffordshire had a population of 113,600 on Census day in 2011, which makes it the third largest local authority within Staffordshire in terms of resident population numbers. Only Newcastle under Lyme and Stafford are larger.

The table also shows that there has been an increase in all Staffordshire local authority areas since the last Census. However, East Staffordshire saw a 9.5% increase in its resident population between 2001 and 2011, which is the fastest growing population within the county and is also above the national and regional growth rates.

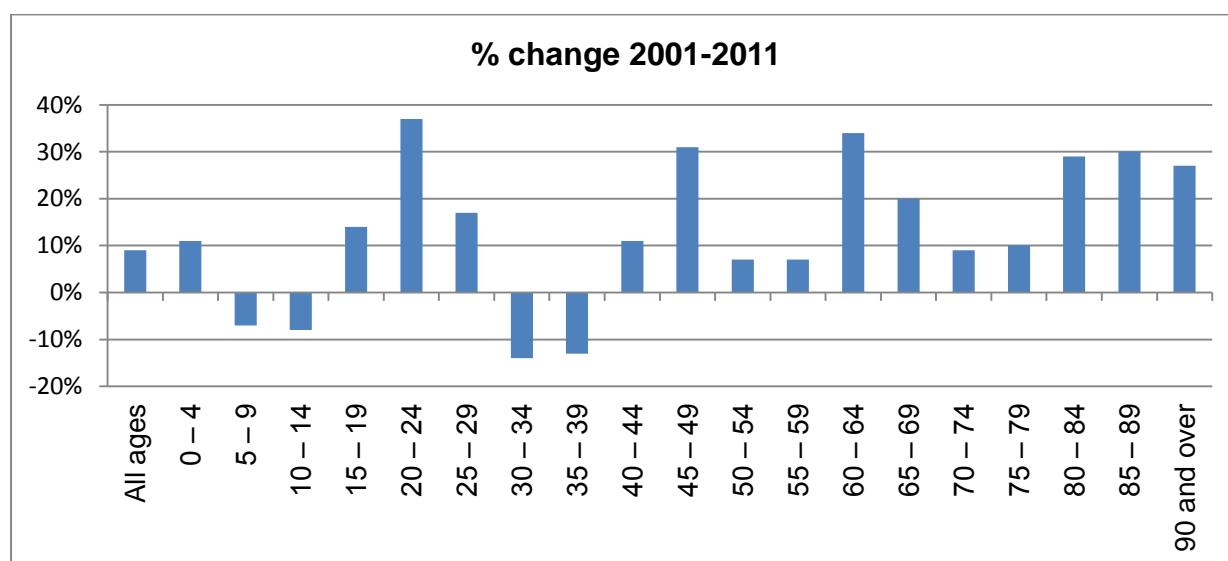
	2001 Population	2011 Population	Change between 2001 & 2011	% Change 2001 & 2011
England	49,138,831	53,012,500	3,873,669	7.9%
West Midlands	5,267,308	5,601,800	334,492	6.4%
Staffordshire	806,744	848,500	41,756	5.2%
Cannock Chase	92,126	97,500	5,374	5.8%
East Staffordshire	103,770	113,600	9,830	9.5%
Lichfield	93,232	100,700	7,468	8.0%
Newcastle u Lyme	122,030	123,900	1,870	1.5%
South Staffordshire	105,896	108,100	2,204	2.1%
Stafford	120,670	130,800	10,130	8.4%
Staffordshire Moorlands	94,489	97,100	2,611	2.8%
Tamworth	74,531	76,800	2,269	3.0%



East Staffordshire – Resident Population by Age

Table 3 looks at the resident population by broad age groups. And as the table and graph illustrate there has been an increase in all age groups between 2001 and 2011 with the exception of those aged 5-14 years and those aged 30 to 39 years.

Table 3: Resident Population by Age – 2011 Census v 2001 Census			
Age (5 yr intervals)	2011 Census (rounded)	2001 Census (rounded)	% change 2001-2011
All ages	113,600	103,800	9%
0 – 4	7,000	6,300	11%
5 – 9	6,600	7,100	-7%
10 – 14	6,700	7,300	-8%
15 – 19	7,200	6,300	14%
20 – 24	6,700	4,900	37%
25 – 29	7,200	6,200	17%
30 – 34	6,800	7,900	-14%
35 – 39	7,300	8,400	-13%
40 – 44	8,600	7,700	11%
45 – 49	8,800	6,700	31%
50 – 54	7,800	7,300	7%
55 – 59	6,600	6,100	7%
60 – 64	7,000	5,200	34%
65 – 69	5,700	4,800	20%
70 – 74	4,600	4,200	9%
75 – 79	3,700	3,400	10%
80 – 84	2,700	2,100	29%
85 – 89	1,600	1,200	30%
90 and over	800	600	27%



The largest increase was in those aged 20-24 years which increased by more than a third (37%) between 2001 and 2011. However, there has also been a significant increase in the number of elderly residents, particularly those over the age of 80.

East Staffordshire – Resident Population by Gender

The population of East Staffordshire in 2011 is almost equally split by gender, with 49.6% of residents being male compared to 50.4% female. The gender gap is closing – in 2001 females outnumbered males with 51.3% female compared to 48.7% male. This has been due to a faster growth in the number of males – an increase of 11.5% between 2001 and 2011 compared to a 7.5% increase in the number of females.

Gender	2011 Census	2001 Census	% Change between 2001 & 2011
All people	113,600	103,770	9.5%
Males	56,400	50,582	11.5%
Females	57,200	53,188	7.5%

East Staffordshire – Communal Establishments

The 2011 Census found 1.8% of East Staffordshire residents live in communal establishment which is the same as the Staffordshire and the England averages.

	All Residents	Household Residents	Communal Establishment Residents	% Living in Communal Establishments
England & Wales	56,075,900	55,072,600	1,003,300	1.8
England	53,012,500	52,061,400	951,000	1.8
West Midlands	5,601,800	5,509,500	92,300	1.6
Staffordshire	848,500	832,900	15,500	1.8
Cannock Chase	97,500	96,800	700	0.7
East Staffs	113,600	111,500	2,100	1.8
Lichfield	100,700	98,900	1,800	1.8
Newcastle-u-Lyme	123,900	119,700	4,200	3.4
South Staffordshire	108,100	106,200	2,000	1.9
Stafford	130,800	127,600	3,300	2.5
Staffordshire Moorlands	97,100	95,900	1,200	1.2
Tamworth	76,800	76,400	400	0.5

East Staffordshire – Number of Households

England & Wales	23,366,000
England	22,063,400
Staffordshire	355,300
Cannock Chase	40,700
East Staffordshire	47,300
Lichfield	41,200
Newcastle-under-Lyme	52,600
South Staffordshire	44,500
Stafford	55,700
Staffordshire Moorlands	41,800
Tamworth	31,600

On Census day East Staffordshire had 47,300 households with a least one resident. This is an increase of around 4,600 on the 2001 Census figure of 42,717 households with residents. This represents a 10.7% increase.

Key points from this release include:

- On census night the population in England and Wales was 56.1 million. This was the largest the population had ever been.
- The population of England and Wales grew by 3.7 million in the 10 years since the last census, rising from 52.4 million in 2001, an increase of 7.1 per cent. This was the largest growth in the population in England and Wales in any 10-year period since census taking began, in 1801.
- East Staffordshire saw a 9.5% increase during this period. This is the highest population growth rate of all the Staffordshire districts and represents an increase of more than 9,800 residents.
- Neighbouring South Derbyshire witnessed a 15.9% increase in its resident population, the largest increase in its county. Such large increases may place a demand on local services.
- The median age of the population in England and Wales was 39. For men, the median age was 38 and for women it was 40. In 1911, the median age was 25 (figures not available at local authority level in this release).
- The percentage of the population aged 65 and over was the highest seen in any census at 16.4 per cent across England and Wales - one in six people was aged 65 and over. The percentage of the population in East Staffordshire aged 65 and over is on a par with this at 16.8% - which represents 19,100 residents. Across Staffordshire generally the population is ageing. The majority of districts have a higher percentage of residents aged 65 and over compared to the national average. Only Cannock Chase and Tamworth have a lower percentage of residents in this age category compared to the national average.
- Nationally there were 430,000 residents aged 90 and over in 2011 compared with 340,000 in 2001 and 13,000 in 1911. Across East Staffordshire there were 800 elderly residents aged 90 and over on Census day, this is a 27% increase on the 2001 figure of 631.
- In 2011, there were 3.5 million children under five in England and Wales, 406,000 more than in 2001. Locally, there were 7,000 under 5's in 2011, which represents an 11% increase on the 2001 figure of 6,300.
- On Census day East Staffordshire had 47,300 households with a least one resident.

More detailed reports will be produced as further 2011 Census figures are released from November 2012 onwards.