

# Ward - Horninglow

## Councillors

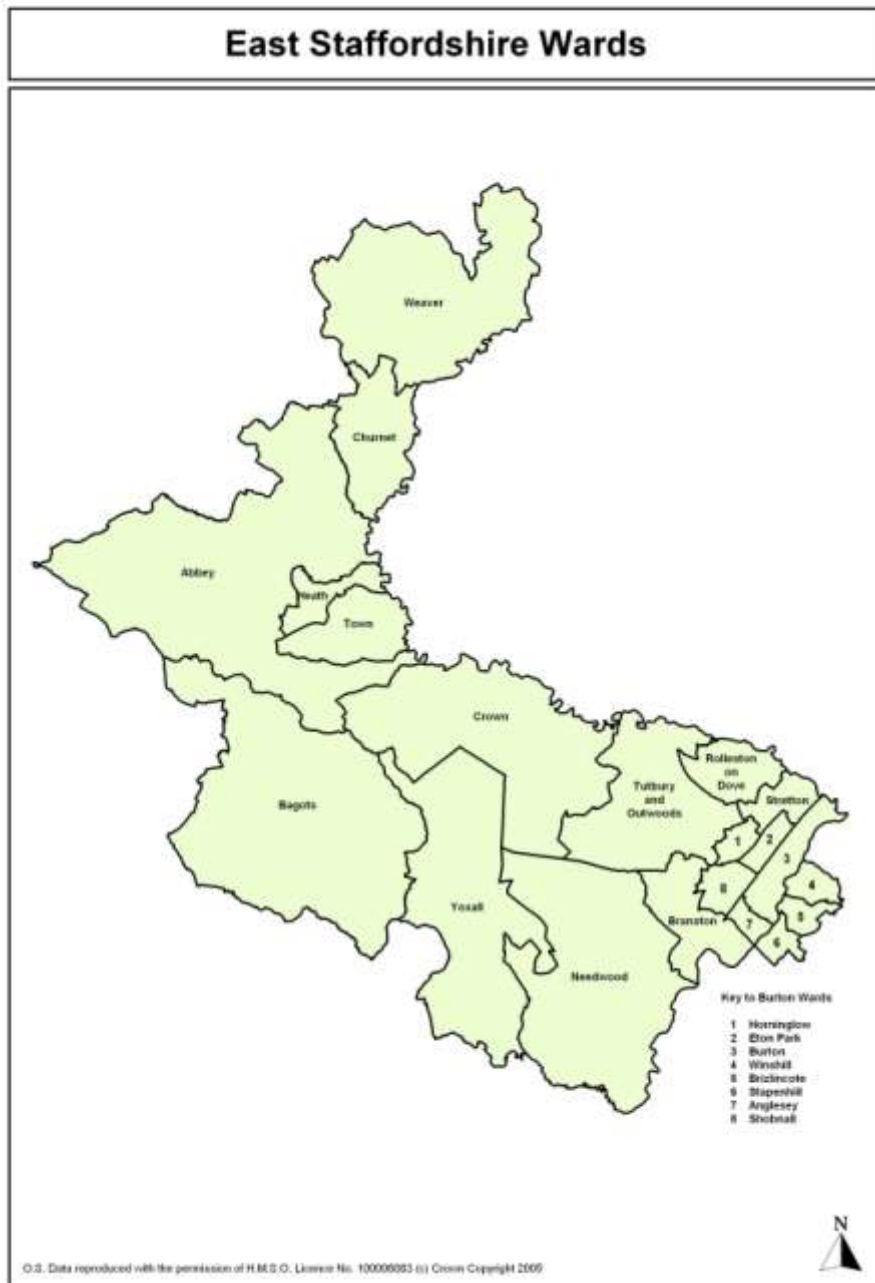
**Kenneth Bulth**  
Labour

**Bob Johnston**  
Labour

**Julian Mott**  
Labour

## Area

Horninglow covers 181 hectares. It is one of the smallest wards in geographical terms and represents 0.5% of the Borough.



## 2001 & 2011 Census

The Census which takes place every ten years provides the most authoritative statistics on our local population. The 2011 Census work has started but the first results from this will not be available until September 2012, and this will initially be at a local authority level. Further results will be released by the Office for National Statistics throughout 2013/14. Therefore, many of the statistics throughout this report refer to the 2001 Census.

### Summary statistics from the 2001 Census of Population

<b>Actual</b>	<b>Horningslow</b>	<b>East Staffordshire</b>	<b>England &amp; Wales</b>
Population	7,828	103,770	52,041,916
Total permanent households	3,312	42,717	21,660,475
<b>Percentage</b>	<b>%</b>	<b>%</b>	<b>%</b>
Male	47.1	48.7	48.7
Female	52.9	51.3	51.3
Ethnic minority	5.9	6.1	8.7
Religion – Christian	77.1	77.4	71.8
No Religion	12.2	11.5	14.8
Children aged 0-15	22.0	21.2	20.2
People aged 16-74	68.3	71.7	72.2
People aged 75+ years	9.3	7.1	7.6
Employed (of those aged 16-74)	59.3	63.1	60.6
Looking after home/family (of those aged 16-74)	7.0	6.6	6.5
Retired (of those aged 16-74)	16.1	14.5	13.6
Occupation – Manager or Senior Official	10.4	15.1	15.1
Occupation – Process, Plant or Machine Operative	15.3	12.1	8.5
Households with no car	33.4	23.2	26.8
Households with 2 or more cars	20.0	32.6	29.4
Travel to Work – by Bike or On Foot	23.6	15.1	12.8
Travel to Work – Drive a Car or Van	54.4	61.8	55.2
Residents with limiting long term illness	20.6	17.1	18.2
Residents who described their health as 'not good'	9.8	7.9	9.2
Residents who provide unpaid care	10.2	10.0	10.0
Owner occupied households	68.3	75.8	68.9
Rented from a Council or RSL	21.7	14.1	19.2
No Central Heating	14.5	15.3	8.5
Pensioner living alone	17.8	14.0	14.4
Single person households	30.4	27.7	30.0
Lone parent households	8.2	5.7	6.5

Source: 2001 Census Area Statistics

Key points from the 2001 Census data show that when compared to East Staffordshire and England & Wales, Horningslow has:

- A lower Black & Minority Ethnic population
- A lower proportion of Christians and a higher proportion with no religion than the Borough average
- A higher proportion of children
- A higher proportion of residents over the age of 75 years
- A lower proportion of residents who are employed
- A higher proportion of residents who look after the family/home
- A lower proportion of residents whose occupation is manager or senior official
- A higher proportion of residents whose occupation is process, plant or machine operative
- A higher proportion of households with no car and a lower proportion with two or more cars
- A higher proportion of residents who travel to work by bike/foot and a lower proportion who drive
- A higher proportion with a limiting long term illness and a higher proportion with 'not good' health
- A higher proportion of residents who provide unpaid care
- A lower proportion of owner occupied households & a higher proportion of Council & RLS rented
- A lower proportion of households without central heating than the Borough average
- A higher proportion of pensioners living alone, single person and also lone parent households

## Population

The most authoritative population estimates are produced every ten years based on the Census of Population. The 2001 Census gives the population of Horninglow as 7,828.

### Age of Resident Population in 2001 - %

	Horninglow	East Staffordshire	England & Wales
Under 16	22.0	21.2	20.2
16 to 19	4.8	4.8	4.9
20 to 29	9.5	10.6	12.6
30 to 59	39.6	42.6	41.5
60 to 74	14.8	13.7	13.3
75 and over	9.3	7.1	7.6
<b>Average Age</b>	<b>39.6</b>	<b>38.6</b>	<b>38.6</b>

Source: 2001 Census Area Statistics

The above figures are updated to produce mid year population estimates in the inter-censal period. The latest figures are for 2009 and these estimate the population of Horninglow to be 8,016, which is a rise of 2.4% on the 2001 Census figure.

### Mid 2009 Population Estimates by Broad Age Group

	All Ages	Children 0 - 15	Working Age 16-64M/59F	Older People 65M/60F & over
Horninglow	8,016	20.6	58.0	21.4
East Staffordshire	108,800	19.6	60.0	20.4
Staffordshire	828,700	17.9	60.4	21.7
West Midlands	5,431,100	19.4	60.6	20.0
England	51,809,700	18.7	61.9	19.3

Source: Office for National Statistics Crown Copyright 2010

### Ethnic Group – Resident Population in 2001 - %

	Horninglow	East Staffs	England & Wales
White	94.1	93.9	91.3
Mixed	1.2	0.9	1.3
Asian or Asian British	3.6	4.3	4.4
Black or Black British	0.8	0.6	2.2
Chinese or Other Ethnic Group	0.3	0.3	0.9
<b>Black &amp; Minority Ethnic</b>	<b>5.9</b>	<b>6.1</b>	<b>8.7</b>

Source: 2001 Census Area Statistics

### Religion – Resident Population - 2001

In the 2001 Census 77.1% of Horninglow residents stated their religion to be Christian. This is just below the East Staffordshire average of 77.4% but above the England & Wales average of 71.8%. 12.2% responded with 'No Religion'. This falls between the East Staffordshire average of 11.5% and the England & Wales average of 14.8%. Christianity is not the only main religion in Horninglow. 2.4% of residents are Muslim. This is below the Borough average, as Islam is the religion of 4.0% of all East Staffordshire residents. However, it is in line with the smaller Black & Minority Ethnic (BME) population in Horninglow.

Key points from the latest population data show that when compared to East Staffordshire and England, Horninglow has:

- A higher percentage of children
- A lower percentage of working age residents
- A higher percentage of older people
- A higher average age (2001)
- A lower Black & Minority Ethnic population
- A lower percentage of Christians and a higher percentage with no religion than the Borough average.

## Economic Activity

### Economic Activity – Resident Population Aged 16 to 74 - %

	Horninglow	East Staffs	England & Wales
Employed	59.3	63.1	60.6
Unemployed	3.3	3.1	3.4
Economically active full-time students	2.1	2.1	2.6
Retired	16.1	14.5	13.6
Economically inactive students	3.2	3.1	4.7
Looking after home/family	7.0	6.6	6.5
Permanently sick or disabled	6.1	4.3	5.5
Other economically inactive	2.9	3.2	3.1

Source: 2001 Census Area Statistics

64.7% of all Horninglow residents aged 16 to 74 are economically active (full and part-time employed, self-employed, unemployed or economically active full-time student). This is below the East Staffordshire average of 68.3% and the England & Wales average of 66.5%.

Key points from the 2001 Census economic activity data show that when compared to East Staffordshire and England & Wales, Horninglow has:

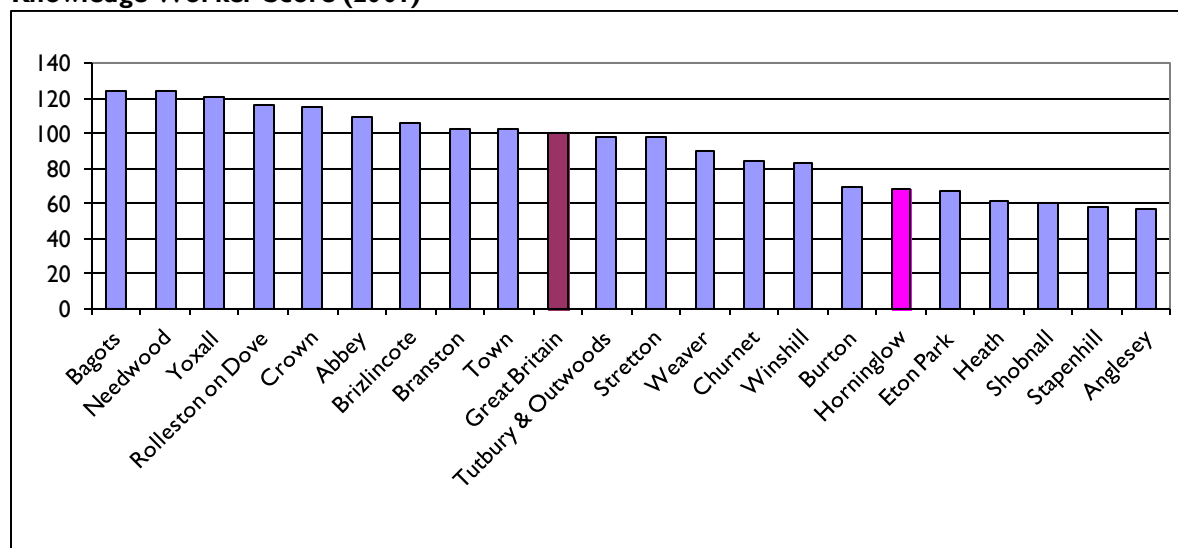
- A lower employment rate
- A higher proportion of economically inactive students than the Borough average
- A higher proportion of retired residents
- A higher proportion of those who are looking after the home/family
- A higher proportion of those who are permanently sick or disabled
- A lower 'other' economically inactive rate

### Occupation Groups – Resident Population Aged 16-74 - %

	Horninglow	East Staffs	England & Wales
Managers & Senior Officials	10.4	15.1	15.1
Professional	7.2	9.4	11.2
Associate Professional & Technical	9.7	11.0	13.8
Admin & Secretarial	11.6	11.3	13.3
Skilled Trades	13.4	12.9	11.6
Personal Service	7.5	6.5	6.9
Sales & Customer Service	7.1	6.8	7.7
Process, Plant & Machine Operatives	15.3	12.1	8.5
Elementary e.g. labourers, porters	17.7	14.7	11.9

Source: 2001 Census Area Statistics

### Knowledge Worker Score (2001)



Source: Local Knowledge; Census 2001

The Knowledge Worker Score is an index showing the proportion of working age residents that are employed in knowledge occupations. These occupations are based on the following SOC groups:

- 1) Managers and Senior Officials
- 2) Professional Occupations
- 3) Associate Professional and Technical Occupations

The national average is 100 – if the figure is below 100 for a ward then a lower proportion of its residents work in knowledge occupations.

Key points from the 2001 Census occupation group data show that when compared to East Staffordshire and England & Wales, Horninglow has:

- A lower proportion of managers & senior officials, professionals, associate professional and technical occupations.
- A higher proportion of skilled trades, personal service, process, plant and machine operatives and elementary occupations
- A lower proportion of knowledge workers than the Great Britain average.

### Industrial Groups – Resident Population Aged 16-74 in Employment - %

	Horninglow	East Staffordshire	England & Wales
Agriculture; Hunting; Forestry & Fishing	0.5	2.1	1.5
Mining & Quarrying	0.0	0.3	0.3
Manufacturing	24.8	22.7	15.0
Electricity; Gas & Water Supply	0.7	0.8	0.7
Construction	7.2	7.0	6.8
Wholesale & Retail Trade; Repair of Motor Vehicles	16.7	17.3	16.8
Hotels & Restaurants	4.5	4.9	4.8
Transport; Storage & Communication	5.7	6.5	7.0
Financial Intermediation	1.4	1.9	4.7
Real estate; Renting & Business Activities	8.8	10.4	13.0
Public Administration & Defence; Social Security	3.2	3.5	5.7
Education	6.0	7.5	7.8
Health & Social Work	16.5	10.5	10.8
Other	4.0	4.5	5.2

Source: 2001 Census Area Statistics

Key points from the 2001 Census Industry data show that when compared to East Staffordshire and England & Wales, Horninglow has:

- A higher proportion in manufacturing, construction and health & social work.
- A lower proportion of residents employed in agriculture, hunting, forestry & fishing, wholesale & retail trade, repair of motor vehicles, hotels & restaurants, transport, storage & communications, financial intermediation, real estate, renting and business activities, public administration and defence, social security, education and other.

#### Travel to Work Methods – All People Aged 16-74 in Employment - %

	Horninglow	East Staffs	England & Wales
Work from home	5.5	9.6	9.2
Underground; metro; light rail; Tram	0.0	0.0	3.0
Train	0.7	0.8	4.1
Bus; Mini Bus or coach	5.8	3.7	7.4
Motorcycle; Scooter; moped	1.2	1.0	1.1
Driving a car or van	54.4	61.8	55.2
Passenger in a car or van	7.8	7.1	6.3
Taxi or minicab	0.8	0.6	0.5
Bicycle	6.6	4.1	2.8
On foot	17.0	11.0	10.0
Other	0.3	0.4	0.5

Source: 2001 Census Area Statistics

Key points from the 2001 Census Travel to Work data show that when compared to East Staffordshire and England & Wales, Horninglow has:

- A lower proportion of residents who work from home
- A higher proportion of residents who travel by bus than the Borough average
- A lower proportion of residents who drive to work
- A higher proportion of residents who are passengers in a car or van
- A higher proportion of residents who use a bicycle
- A significantly higher proportion who travel on foot.

#### Number of Employees & Proportion of Full-time & Part-time Employment – 2009

	Number of Employees	% Full time	% Part time
Horninglow	3,900	51.3	48.7
East Staffordshire	53,000	70.3	29.7
Staffordshire	309,300	68.0	32.0
England & Wales	23,823,600	67.9	32.1

Source: Business Register and Employment Survey 2009 (Figures are rounded to nearest 100)  
These figures exclude farm agriculture

Key points from the 2009 Employment Survey data show that when compared to the East Staffordshire average, Horninglow has:

- A significantly lower proportion of full-time employees
- A significantly higher proportion of part-time employees – almost half of the employees work part-time.

## Unemployment

April 2011	Horninglow	East Staffordshire	Staffordshire	England
Total unemployed - %	4.0	2.9	2.8	3.7
<b>Of which:</b>				
% aged under 25	25.4	31.1	31.7	28.2
% unemployed for over 12 months	11.4	8.2	11.4	14.0

Source: Nomis – Claimant Count

Key points from the unemployment data show that when compared to Staffordshire and East Staffordshire, Horninglow has:

- A higher unemployment rate
- A lower youth unemployment proportion
- A higher long term unemployment proportion than the Borough average

## Education

### Key Stage 2 Test Results in 2010 - %

Key Stage 2 Results	Both English & Maths	English	Maths	Average Point Score
2010	%		%	
St Modwen's RC(A) Primary	Boycott school			
Victoria Community School	Boycott school			
Outwoods Primary School	Boycott school			
Staffordshire Average	74	81	81	27.6
England Average	73	80	79	27.5

The table shows the percentage of eligible pupils achieving Level 4 or above in each subject. Level 4 is the level expected of most 11 year olds.

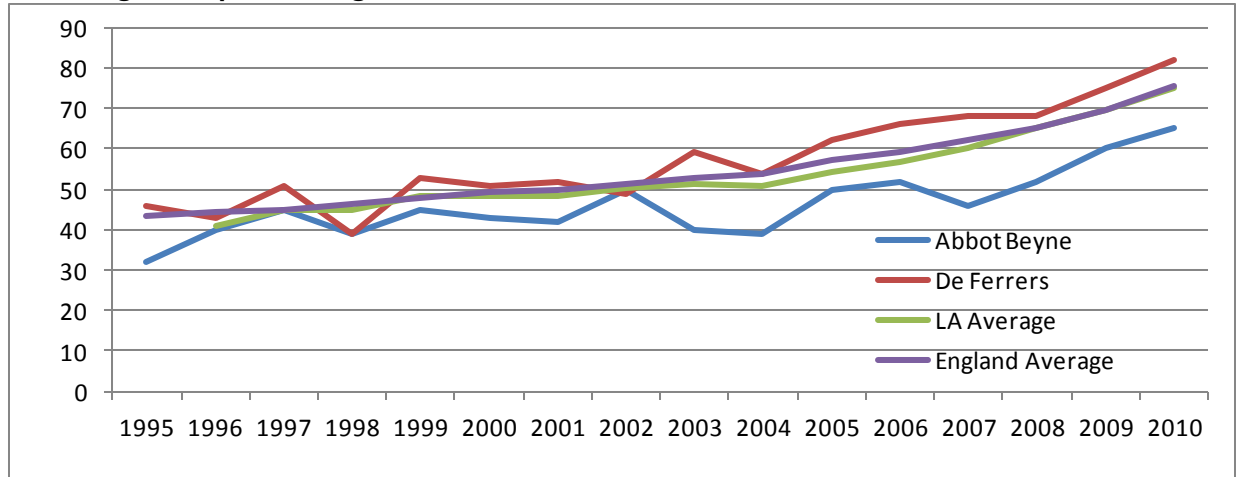
Source: DfES

### School Absence Statistics - 2010

School performance tables - 2010	Number of Pupils (all ages)	Overall absence	Unauthorised absence	Persistent absence
Local Authority Average		6.7%	0.8%	4.1%
England (all schools)		6.9%	1.4%	4.6%
Abbot Beyne School	851	6.1%	0.4%	3.2%
Abbots Bromley School for Girls	254	Absence return not required		
Blessed Robert Sutton Catholic College	685	7.4%	1.6%	5.1%
De Ferrers Specialist Technology College	1916	6.3%	0.5%	4.0%
Denstone College	577	Absence return not required		
John Taylor High School	1479	4.7%	0.3%	2.0%
Paget High School	1003	7.7%	0.8%	5.8%
Paulet High School	696	6.7%	0.9%	5.3%
Thomas Alleyne's High School	1346	7.2%	1.6%	6.2%

Source: DfES

### Percentage of Pupils Gaining 5 or More GCSE Grades A\*-C in 2010



Source: DfES

### Percentage of Pupils With 5+ GCSE's Grades A\* - C Including English & Maths

% of pupils at the end of Key Stage 4 achieving 5+A*-C (and equivalent) including English and Maths GCSEs	2007	2008	2009	2010
Local Authority	45.7%	49.7%	50.8%	54.0%
England (state funded schools only)	45.6%	48.2%	50.7%	55.2%
England (all schools)	46.3%	47.6%	49.8%	53.4%
Abbot Beyne School	38%	34%	41%	42%
Abbots Bromley School for Girls	100%	71%	75%	89%
Blessed Robert Sutton Catholic Sports College	64%	52%	47%	62%
De Ferrers Specialist Technology College	48%	55%	55%	55%
Denstone College	94%	90%	79%	86%
John Taylor High School	69%	77%	71%	72%
Paget High School	36%	37%	40%	42%
Paulet High School	23%	30%	34%	60%
Thomas Alleyne's High School	60%	58%	49%	58%

Source: DfES

### Post 16 Education – Average point score - (including A\* grade in 2010)

	Average point score per student			Average point score per exam		
	2008	2009	2010	2008	2009	2010
Local Authority Average	693.7	707.5	699.1	198.4	203.2	206.4
England Average (excluding independent)	721.3	721.3	726.6	205.8	208.3	211.1
Abbot Beyne School	769.9	686.1	750.6	209.1	195.4	213.2
Abbots Bromley School for Girls	792	783.6	859.3	231.6	222.4	230.5
Blessed Robert Sutton Catholic Sports College	462.2	695.8	569.6	168.1	205.7	173.7
Burton College - Burton on Trent	563.5	614.1	584.3	212.8	213.1	213.1
De Ferrers Specialist Technology College	760.7	798.4	843.5	188	189	189.5
Denstone College	757.2	821.9	777	228.8	231.7	236.9
John Taylor High School	770.3	779.3	855.8	192	205.9	222
Paget High School	599.7	602.7	500.8	185.8	183.5	181.2
Paulet High School	435	507.3	643.8	153.5	167.2	191.6
Thomas Alleyne's High School	715.3	709.7	710.5	208.5	203	199.4

Source: DfES



### School Leaver Activity Survey in 2010 - %

	Sub-total: Continuing with structured learning %	Continued full-time education %	Structured learning in the workplace %	Jobs with no structured training %	Not yet settled in any full- time positive activity %	Failed to respond or moved away %
<b>Abbot Beyne – 186 school leavers</b>						
On leaving Y11 in 2009	91.9	85.5	6.5	1.1	6.5	0.5
% point change	-2.7	-9.7	6.9	1.1	0.5	1.1
One year on in 2010	89.2	75.8	13.4	2.2	7.0	1.6
<b>De Ferrers – 334 school leavers</b>						
On leaving Y11 in 2009	91.6	85.6	6.0	1.5	6.3	0.6
% point change	-4.8	-10.7	6.0	0.9	1.2	2.7
One year on in 2010	86.8	74.9	12.0	2.4	7.5	3.3
<b>East Staffordshire – 1546 school leavers</b>						
On leaving Y11 in 2009	92.2	85.0	7.2	1.4	5.6	0.8
% point change	-5.9	-11.6	5.7	1.2	1.8	2.9
One year on in 2010	86.3	73.4	12.9	2.6	7.4	3.7
<b>Staffordshire Local Authority Average – 10,149 school leavers</b>						
On leaving Y11 in 2009	94.9	87.2	7.7	0.8	3.7	0.6
% point change	-7.6	-12.1	4.5	1.3	2.5	3.8
One year on in 2010	87.3	75.1	12.2	2.1	6.2	4.4

Source: Connexions Staffordshire Ltd

### Percentage in Receipt of Free School Meals – October 2010

Primary Schools	%	Middle & Secondary Schools	%
William Hutson Junior	?	Abbot Beyne	17.5
Victoria Community	22.0	De Ferrers High	10.1
Horninglow Infants	26.4		
East Staffordshire	14.5	East Staffordshire	8.7
Staffordshire	13.3	Staffordshire	9.4

Source: Staffordshire LEA

The School Census summaries, at a ward level, some of the information set out above. It is collected by Staffordshire County Council and covers nursery, primary, middle, secondary and special schools in the maintained sector in Staffordshire. It includes information on pupils by gender, free school meal eligibility, ethnicity, special educational needs, travel to school methods and gifted and talented status.

### School Census 2010

2010	Horninglow	East Staffordshire	Staffordshire
% of pupils who are girls	51.6	48.8	48.8
% of pupils who are boys	48.4	51.2	51.2
% of BME pupils	20.6	18.6	7.2
% who have Free School Meals	18.1	13.4	12.4
% of pupils subject to School Action	11.8	12.8	10.6
% of pupils subject to School Action Plus	4.3	12.8	10.6
% of pupils who have a SEN Statement	3.4	2.3	2.7
% of pupils who are subject to School Action Plus or have a SEN Statement	7.8	6.6	7.6
% of pupils travelling to school by car/van	18.0	23.7	27.7
% of pupils travelling to school by bus	1.3	1.9	2.4
% of pupils walking to school	69.2	58.1	54.8
% of Pupils who are Gifted or Talented	9.8	10.3	10.4

Source: Staffordshire Observatory/Staffordshire County Council

### Qualifications Held by Resident Population Aged 16-74 in 2001 - %

	Horninglow	East Staffs	England & Wales
Had no qualifications	38.2	31.8	29.1
Qualified to degree level or higher	11.0	16.0	19.8

Source: 2001 Census Area Statistics

Key points from the schools data show that when compared to Staffordshire and England averages, schools in and around Horninglow have:

- No Key Stage 2 results (boycott schools)
- A lower level of absence at Abbot Beyne and de Ferrers
- A higher percentage of eligible pupils achieving 5 or more GCSEs at grades A-C at de Ferrers but a lower percentage at Abbot Beyne
- A lower percentage achieving 5 or more GCSEs at grades A-C that include English & Maths at Abbot Beyne and a similar rate to the England average at de Ferrers
- A higher average point score per student and per exam at GCE level (post 16) at Abbot Beyne but a lower average point score per exam at de Ferrers
- A higher percentage of pupils receiving free school meals at all the primary schools and secondary schools
- A higher percentage of school leavers continuing with structured learning at Abbot Beyne in 2010 and a similar percentage to the East Staffordshire average at De Ferrers
- A higher percentage of school leavers not yet settled in any full-time positive activity at De Ferrers and Abbot Beyne in 2010 compared to the Staffordshire average.

Key points from the 2010 School Census show that when compared to East Staffordshire averages, pupils in Horninglow are:

- More likely to be of BME origin
- More likely to have free school meals
- Less likely to be subject to School Action or School Action Plus
- More likely to have a SEN statement
- Less likely to travel to school by car or bus
- More likely to travel to school on foot
- Less likely to be termed gifted or talented.

Key points from the Census show that when compared to East Staffordshire and England & Wales averages, Horninglow has:

- A higher proportion of residents with no qualifications
- A lower proportion of residents qualified to degree level or above

# Health

## Key Health Comparators - %

2001 Census Area Statistics	Horninglow	East Staffordshire	England & Wales
Residents with limiting long-term illness (2001)	20.6	17.1	18.2
Residents who described their health as 'Good'	66.0	69.4	68.6
Residents who described their health as 'Fairly Good'	24.2	22.6	22.2
Residents who described their health as 'Not Good'	9.8	7.9	9.2
Residents who provide unpaid care	10.2	10.0	10.0

Source: 2001 Census Area Statistics

## Health Lifestyle Behaviours – Model Based Estimates Jan 2003 to Dec 2005

	Horninglow	East Staffordshire
Proportion of Residents who Smoke	27.2	25.8
Proportion of Residents who Binge Drink	17.8	17.4
Proportion of Residents who are Obese	29.5	26.2
Proportion of Residents who consume 5+ Portions of Fruit & Veg	22.5	24.5
The data for this indicator is part of a data modelling exercise carried out based on the Health Survey of England. Results are based on 3 year sample data of 16,000 adults and 4,000 children each year. The figures should not be used as actual figures but rather should be viewed as expected levels based on the socio-demographic characteristics of the area.		

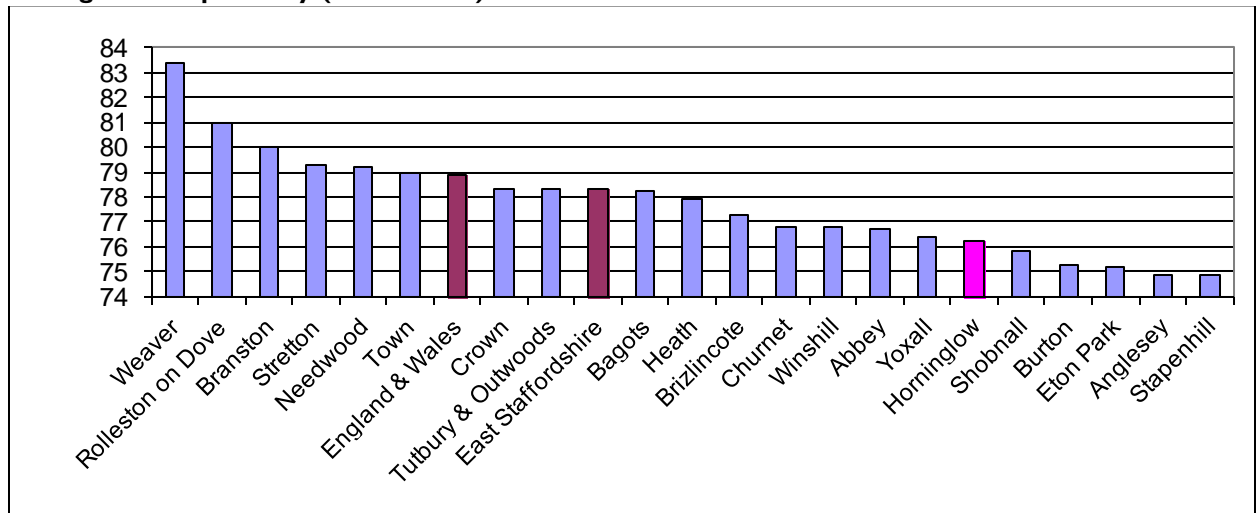
Source: The NHS Information Centre for Health & Social Care

## Hospital Admissions: Summary Statistics – April 2007 to March 2008

Hospital Admissions: Summary Statistics	Horninglow	East Staffs	West Midlands	England
All Finished Admission Episodes	2,180	25,730	1,273,286	11,999,765
Coronary Heart Disease (CHD); Diagnosis	163	1,775	101,407	1,000,332
Cerebrovascular Disease (including Stroke); Diagnosis	40	438	23,794	187,962
Cancer (excluding non-melanoma skin cancer); Diagnosis	334	3,844	170,651	1,326,050
Falls (basic accidental falls); External cause	58	762	34,260	365,098
Hip Replacement; Operation	12	187	7,938	69,434
Knee Replacement; Operation	11	192	8,788	71,541
Cataract; Operation	61	644	31,177	326,758

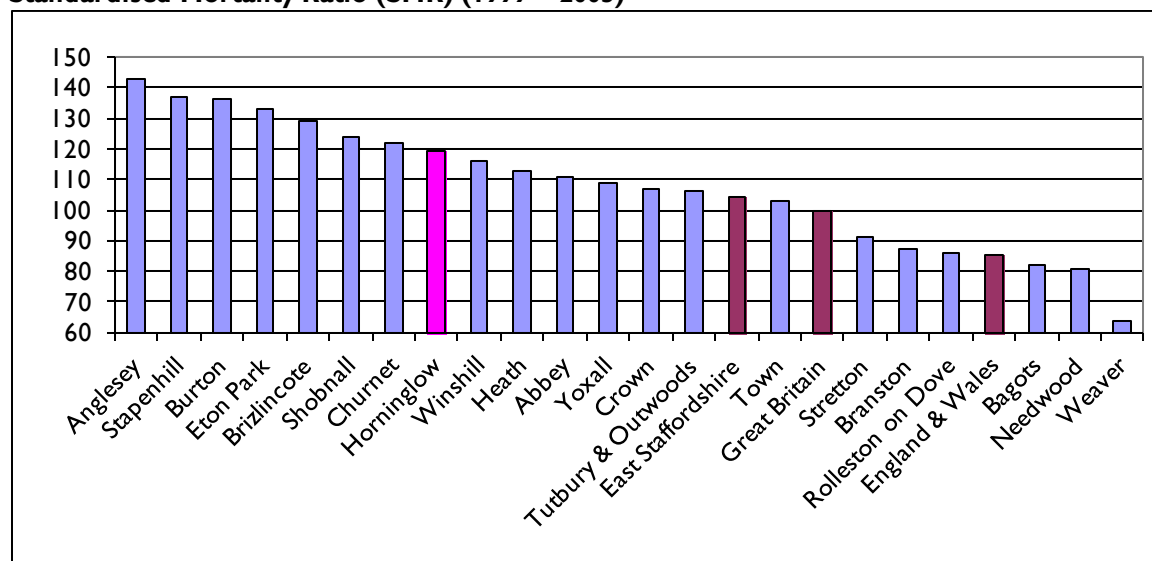
Source: NHS Information Centre for Health & Social Care

## Average Life Expectancy (1999 – 2003)



Source: Local Knowledge; Life Expectancy at Birth

### Standardised Mortality Ratio (SMR) (1999 – 2003)



Source: Local Knowledge; Standardised Mortality Ratios

The Standardised Mortality Ratio compares overall mortality in a locality with that for the UK as a whole. The ratio expresses the number of deaths in a locality as a percentage of the hypothetical number that would have occurred if the local population had experienced the sex/age specific rates of the UK in that year. The lower the figure, the lower the relative mortality.

In the table below the Health Intelligence and Clinical Evidence Team, Staffordshire Public Health have summarised some of the key health indicators. Those shaded red are statistically worse than the England average. The following measurements are statistically worse for those living in Horninglow:

- Life expectancy at birth for females (years)
- All-age all cause mortality rate per 100,000 population
- Premature mortality (rate per 100,000 population aged under 75)
- Premature mortality from cancers (rate per 100,000 people aged under 75)
- Mental Illness Needs Index (MINI)
- Percentage of population with a self reported limiting long term illness
- Smoking prevalence and obesity prevalence - adults (Mosaic estimates)
- Percentage of adult population eating five or more portions of fruit or vegetables a day
- Percentage of adult population doing no exercise in the last month (Mosaic estimates).

### Summary of Key Health Indicators

	Horninglow	East Staffs
Percentage of births with a low birth weight (under 2,500 grams) (2004/08)	8.5%	9.1%
Life expectancy at birth for males (years) (2004/08)	75.5	76.9
Life expectancy at birth for females (years) (2004/08)	79.5	81.1
All-age all cause mortality rate per 100,000 population (2004/08)	736	626
Premature mortality (rate per 100,000 population aged under 75) (2004/08)	386	306
Premature mortality from circulatory diseases (rate per 100,000 people aged under 75) (2004/08)	111	80
Premature mortality from cancers (rate per 100,000 people aged under 75) (2004/08)	156	113
Mental Illness Needs Index (MINI) (rate per 100,000 population) (2000)	582	350
Percentage of population with a self reported limiting long term illness (2001)	20%	17%
Smoking prevalence - adults (Mosaic estimates) (2009)	30%	25%
Obesity prevalence - adults (Mosaic estimates) (2009)	18%	17%
Percentage of adult population eating five or more portions of fruit or vegetables a day (Mosaic estimates) (2009)	21%	24%
Percentage of adult population doing no exercise in the last month (Mosaic estimates) (2009)	56%	51%

Source: Health Intelligence and Clinical Evidence Team, Staffordshire Public Health

Key points from the 2001 Census show that when compared to the East Staffordshire and England & Wales averages Horninglow has:

- A higher proportion suffering with a limiting long-term illness
- A higher proportion whose health is 'Not Good'
- A higher proportion of residents who provide unpaid care

Key points from the Healthy Lifestyle Behaviours Survey show that when compared to the Borough average Horninglow is thought to have:

- A higher proportion of residents who binge drink, smoke and who are obese
- A lower proportion of adults that eat 5 or more portions of fruit and vegetables a day

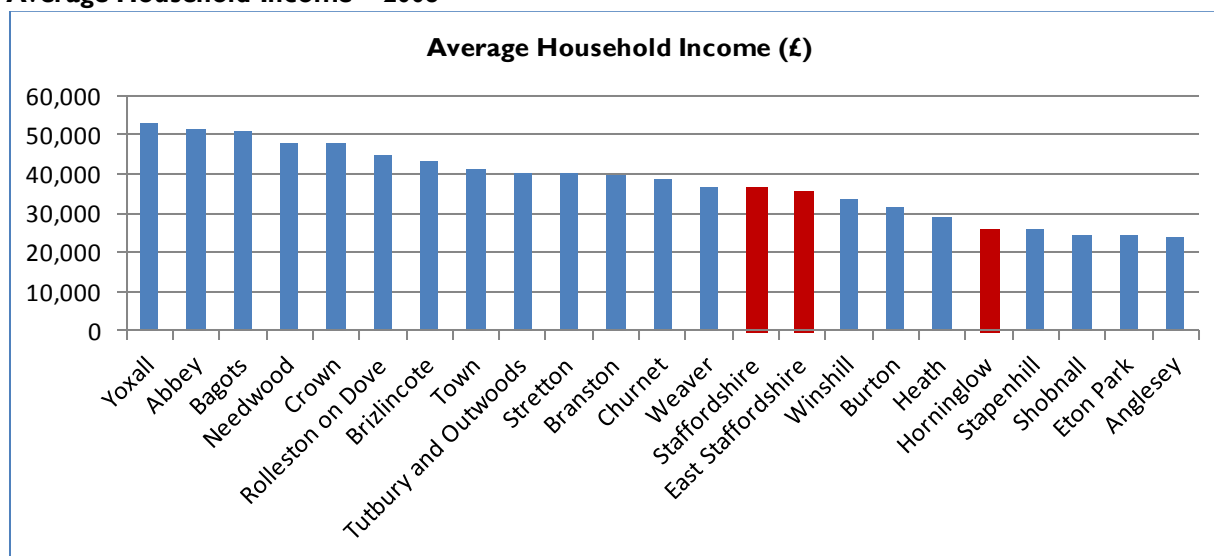
Key points from the 1999 – 2003 life expectancy and standardised mortality ratio data show that when compared to the national average Horninglow has:

- A lower than average life expectancy
- A higher than average SMR

## Income

The average household income across East Staffordshire in 2008 was £35,500, which is slightly below the Staffordshire average of £36,800. However, across Horninglow the average household income in 2008 was £25,800, which is below the Borough and County figures.

### Average Household Income – 2008



Source: Axiom IncomeX

### DWP Benefit Claimants – Working Age Clients – May 2010

Proportion of resident population aged 16-64 claiming benefits			
%	Horninglow	East Staffordshire	Great Britain
Total claimants	19.3	13.3	14.7
Job seekers	4.4	3	3.5
ESA and incapacity benefits	8.5	6	6.7
Lone parents	2.3	1.5	1.7
Carers	1.8	1.1	1.1
Others on income related benefits	0.5	0.5	0.5
Disabled	1.4	1	1
Bereaved	0.4	0.3	0.2

Source: DWP Benefit Data – Nomis

Key points from the income data show that when compared to East Staffordshire, Horninglow has:

- An average household income of £25,800, which is below the East Staffordshire average (£35,500)
- A higher proportion of total benefit claimants
- A higher proportion claiming each individual benefit.

## Housing

At the time of the 2001 Census there were 3,312 household spaces with residents in Horninglow. There was also an additional 145 household spaces without residents, making a total of 3,457 household spaces in Horninglow in April 2001.

### Households – 2001 Census Findings - %

	Horninglow	East Staffs	England & Wales
One person households	30.4	27.7	30.0
Pensioner living alone	17.8	14.0	14.4
Other all pensioner households	10.3	9.6	9.4
Contained dependent children	31.2	31.0	29.5
Lone parent households with dependent children	8.2	5.7	6.5
Owner occupied	68.3	75.8	68.9
Rented from Council	13.7	8.1	13.2
Rented from Housing Association or RSL	8.0	6.0	6.0
Private rented or lived rent free	9.9	10.2	11.9
Without central heating	14.5	15.3	8.5
Without sole use of bath, shower or toilet	0.8	0.3	0.5
Have no car or van	33.4	23.2	26.8
Have 2 or more cars or vans	20.0	32.6	29.4
Average household size (number)	2.3	2.4	2.4
Average number of rooms per household	5.2	5.7	5.3

Source: 2001 Census Area Statistics

Key points from the housing data show that when compared to East Staffordshire, households in Horninglow are:

- More likely to be single person households, single pensioner or all pensioner households, lone parent households and households containing dependent children
- Less likely to be owner occupied
- More likely to be rented from the Council or an RSL
- Less likely to be private rented or living rent free
- Less likely to be without central heating than the Borough average
- More likely to have no car or van and less likely to have 2 or more cars or vans
- More likely to be smaller in terms of number of people and number of rooms

### Households – 2001 Census – Accommodation Type - %

	Horninglow	East Staffs	England & Wales
Percentage living in a detached house	12.4	31.7	22.8
Percentage living in a semi-detached house	38.6	32.8	31.6
Percentage living in a terraced house	34.4	25.7	26.0
Percentage living in a flat or maisonette	14.5	9.4	19.2
Percentage living in a caravan or mobile home	0.1	0.4	0.4

Source: 2001 Census Area Statistics

Key points from the 2001 Census show that when compared to East Staffordshire, households in Horninglow are:

- Significantly less likely to be in a detached house
- More likely to be in a semi-detached house
- More likely to be in a terraced house
- More likely to be in a flat or maisonette than the Borough average
- Less likely to be in a caravan or mobile home

### Private Sector House Condition Survey 2008

The 2008 House Condition Survey was distributed to a random sample of 1,250 private sector households and entailed full internal and external surveys plus supporting interviews with the occupying households. At the time of the survey there were 41,968 private dwellings, 38,849 of which were occupied (92.6%) and 3,119 (7.4%) were vacant. Of these 14,048 households (36.2%) are elderly and 12,464 households are economically vulnerable (32.1%). There is a mixed age profile with 16,596 dwellings (39.5%) constructed pre-1945 and 11,434 dwellings (27.2%) constructed pre-1919.

Housing conditions in the Borough are better than the national average for private housing; however, housing condition problems remain significant:

- 13,445 dwellings (32.0%) are non-decent
- 8,137 dwellings (19.4%) exhibit Category I hazards

	Category I Hazards	Non-decent Homes	Decent homes Energy Failure Rates	Fuel Poverty
Burton & Horninglow	30.3	50.3	25.9	39.2
Inner Burton (Anglesey, Eton Park and Shobnall)	29.9	39.9	18.8	41.7
Rural North (Abbey, Churnet & Weaver)	23.9	31.3	22.5	33.6
Rural South (Bagots, Crown, Needwood, Rolleston on Dove, Tutbury & Outwoods, Yoxall)	21.0	39.5	26.9	44.6
Winshill & Stapenhill	14.5	23.5	12.3	32.9
Uttoxeter (Heath & Town)	12.0	22.8	9.6	27.2
Outer Burton (Branston, Brizlincote and Stretton)	8.4	18.5	11.1	27.2
Borough Average	19.4	32.0	18.1	35.5

#### Category I hazards

These include falls on steps/stairs, excess cold, dampness/mould and crowding/space. Category I hazards are not evenly distributed across the Borough but are higher across the Inner Burton and Burton/Horninglow areas

#### Non-decent homes

The most common reasons for failing the Decent Homes Standard relate to energy efficiency and Category I hazards. Patterns of non-decent housing are similar to those for Category I hazards with

higher rates for the Inner Burton and Burton/Horninglow areas. Rates of non decency are also higher in the Rural South. Poor housing conditions within the Borough are associated with households in social and economic disadvantage. A significant proportion of households living in non-decent homes are made up of the elderly (36.2%) and the economically vulnerable (48.8%).

### Home energy efficiency

The home energy efficiency rates in private housing in the Borough are above the national average. East Staffordshire has an average SAP Rating of 56 compared to an average of 47 for all private housing in England. 7,585 dwellings fail the Decent Homes energy requirements representing 18.1% of all private dwellings.

### Fuel Poverty

13,805 households in the Borough (35.5%) are in Fuel Poverty. The highest rates of fuel poverty are associated with Inner Burton and the Rural South. Rates of fuel poverty are also higher for households in pre-war housing, terraced housing and converted flats. Households most affected include young single households, single parent families and the elderly.

Key points from the 2008 House Condition Survey show that when compared to the East Staffordshire average, private housing stock in the Burton & Horninglow area is:

- More likely to exhibit Category I Hazards
- More likely to be non-decent
- More likely to fail the Decent Homes Energy Rating
- More likely to be in Fuel Poverty

### Register of Electors 2010

The table below shows a count of the number of properties at the time of the 2010 Register of Electors. It shows a total of 3,926 properties in Horninglow ward, which is an increase of 13.6% on the 2001 Census figure. This is above the East Staffordshire increase of 10.4%. There are obviously differences in the way the information is produced but it gives an indication of the change in the number of properties during this period.

Electoral Area	Properties	% of Total	Void Properties	Void % of Props
BD - Horninglow	1,779	45%	220	12%
BE - Horninglow	2,011	51%	102	5%
BF - Horninglow	136	3%	55	40%
<b>Horninglow</b>	<b>3,926</b>	<b>8%</b>	<b>377</b>	<b>10%</b>
East Staffordshire	49,048	100%	3,385	7%

Source: Register of Electors 2010

### Fire Service Arson Returns 2008-2009

Horninglow	%	Number
Arson incidents	9.6	19
Malicious false Alarms: Attended	8.3	1
Malicious false Alarms: Not attended	0.0	0
Primary fires	14.3	1
Accidental dwelling fires	7.7	3
Deliberate vehicle fires	12.1	4
Deliberate other fires	0.0	0
Deliberate grass fires	11.8	2

Source: Staffordshire Fire Service



## Index of Local Deprivation 2010

The Indices of Deprivation 2010 (ID 2010) is a measure of multiple deprivation at a small area level. The small geographical areas the ID 2010 is based upon are called Lower Layer Super Output Areas (LSOA's) and each account for between 1,000 and 3,000 people. The purpose of basing the Indices upon LSOA's is to pinpoint small areas of deprivation that may otherwise be hidden within larger wards. The ID 2010 consists of an overall measure of deprivation and seven specific aspects – Income, Employment, Health and Disability, Education, Skills and Training, Barriers to Housing and Services, Living Environment and also Crime.

There are 32,482 LSOA's in England and five of these are located within Horninglow ward. Below is a summary of the key points arising from the ID 2010 for Horninglow's LSOA's. If the LSOAs fall within the top 10% or top 20% most deprived they are considered here to be deprived:

- **Overall Deprivation:** Three of Horninglow's five LSOAs have seen deterioration in their rankings since 2007. However, these are not deprived areas. The two most deprived LSOAs in Horninglow have seen an improvement on their 2007 rankings, but one is still within the **top 20% most deprived** and the other is just outside of this.
- **Income Deprivation:** As with 'overall deprivation' two of Horninglow's LSOAs are income deprived – one falls within the **top 20% most deprived** and the other is just outside of this.
- **Employment Deprivation:** Horninglow experiences employment deprivation with two of its LSOAs falling within the **top 20% most deprived**.
- **Health & Disability Deprivation:** The same two LSOAs experience Health & Disability deprivation – one of the LSOAs is in the **top 10% most deprived** and another is in the **top 20% most deprived**.
- **Education, skills and training deprivation:** One of Horninglow's LSOAs is in the **top 20% most deprived** for education, skills and training. Two more are in the top 25% most deprived.
- **Barriers to housing and services deprivation:** None of the LSOAs are deprived in terms of barriers to housing and services. In fact one LSOA is within the top 10% least deprived and another is within the top 20% least deprived.
- **Crime Deprivation:** None of the LSOAs are deprived in terms of crime.
- **Living environment deprivation:** Horninglow is deprived in terms of its living environment. One LSOA falls within the **top 10% most deprived** and a second falls within the **top 20% most deprived**.

According to the Indices of Deprivation 2010 Horninglow ward exhibits deprivation. In particular, there is deprivation found in terms of health & disability and the Living Environment. There is also deprivation experienced in terms of income, employment and education for some areas of the ward. Two of Horninglow's LSOA's are relatively more deprived than the others.

## Place Survey 2008 – 2009

All local authorities are required to undertake a Place Survey containing a standard set of questions which are designed to capture local people's views, experiences and perceptions. The aim is to use the findings to ensure that improvements for an area reflect local views and preferences. A random sample of 3,000 residents (aged 18 and over) were selected and 1,134 responses were received – a response rate of 38%. The findings set out below were calculated as a proportion of respondents who answered each question and exclude those who did not reply. The tables include a column for ranking within East Staffordshire, with a ranking of 1 being the most satisfied and 21 being the least satisfied.

### The Local Area

Respondents were asked to select five factors they felt were most important in making somewhere a good place to live and they were then asked to select the five that were most in need of improvement in their local area. The results for East Staffordshire as a whole are set out below:

Most important	Most in need of improvement
The level of crime (65%)	Activities for teenagers (47%)
Clean streets (45%)	Level of traffic congestion (37%)
Health services (41%)	Road and pavement repairs (31%)
Affordable decent housing (36%)	The level of crime (26%)
Education provision (28%)	Public transport (25%)

Only one factor (the level of crime) is thought to be both important and in need of improvement which suggest the Council and its partners are performing well in the areas considered to be the most important to the local residents.

Respondents were asked how satisfied or dissatisfied they are with their local area as a place to live. In Horninglow 70% of respondents were very/fairly satisfied, which is below the Borough average (79%). The survey found that older respondents were more likely to be satisfied with their local area than younger respondents. However, Horninglow has a higher proportion of residents of pensionable age than the Borough average.

Respondents were asked how satisfied or dissatisfied they are with their home as a place to live. In Horninglow 87% of respondents were very/fairly satisfied which is below the Borough average (90%). The survey found that home owners were more likely to be satisfied with their home than those who were renting. Horninglow has a lower proportion of home owners than the Borough average (2001 Census).

Respondents were asked how strongly they feel they belong to their immediate neighbourhood. In Horninglow 58% of respondents feel they very/fairly strongly belong which is below the Borough average (61%). The survey found that older respondents (65+) were more likely to feel they belong to their immediate neighbourhood and those who rent privately were less likely to feel so.

% of respondents who are:	Horninglow	East Staffordshire	Comparison with East Staffordshire	Rank within East Staffordshire	England Average	Comparison with England
Satisfied with local area	70	79	↓	15	80	↓
Satisfied with home as a place to live	87	90	↓	15	N/A	N/A
Feel they belong to immediate neighbourhood	58	61	↓	13	59	↓

### Local Public Services

This section covers perceptions of and satisfaction with local public services. Generally older respondents were more positive than younger respondents. There are a wide range of factors that

may affect how people feel about their local authority and its services, such as demographic characteristics, how informed people are, and views on participation and local decision making.

In Horninglow the respondents are less likely to agree with any of the statements regarding local public services.

% of respondents who think local public services are:	Horninglow	East Staffordshire	Comparison with East Staffordshire	Rank within East Staffordshire
Working to make the area safer	65	67	↓	11
Working to make the area cleaner and greener	62	71	↓	16
Promote the interests of local residents	38	43	↓	15
Act on the concerns of local residents	38	47	↓	18 (joint)
Treat all types of people fairly	58	72	↓	19

Respondents were asked how satisfied or dissatisfied they are with a number of different local services. In Horninglow the satisfaction levels are below the Borough average for Staffordshire Police, the local hospital and local dentists. Again older people were more positive than younger people and females were more satisfied than males.

% of respondents who are satisfied with:	Horninglow	East Staffordshire	Comparison with East Staffordshire	Rank within East Staffordshire
Staffordshire Police	57	62	↓	19
Staffordshire Fire & Rescue	87	84	↑	5 (joint)
Your GP	86	85	↑	9 (joint)
Local hospital	75	78	↓	14 (joint)
Local dentist	68	72	↓	13

Respondents were asked if they had used a number of services provided or supported by the Council in the last 12 months. Compared to the Borough average, fewer Horninglow respondents had used sport facilities, museums, theatres and parks.

% of respondents who have used the service in last 12 mths:	Horninglow	East Staffordshire	Comparison with East Staffordshire	Rank within East Staffordshire
Local tips/Household WRC	91	90	↑	14 (joint)
Local Transport Information	58	57	↑	11
Bus	75	57	↑	2
Sport	53	57	↓	15 (joint)
Libraries	59	59	→	10
Museums	21	22	↓	12
Theatres	23	30	↓	15 (joint)
Parks	83	87	↓	13 (joint)

Respondents were asked to state the extent to which they agree or disagree that the County Council and Borough Council provide value for money. Horninglow respondents were less likely to agree with the statements than the Borough average.

% of respondents who think:	Horninglow	East Staffordshire	Comparison with East Staffordshire	Rank within East Staffordshire
East Staffordshire Borough Council provides value for money	24	31	↓	16
Staffordshire County Council provides value for money	26	30	↓	11 (joint)

Respondents were asked how satisfied they are with the way the County Council and Borough Council runs things. Horninglow respondents were less likely to be satisfied with how the local authorities run things than the Borough average.

% of respondents who are satisfied with the way:	Horninglow	East Staffordshire	Comparison with East Staffordshire	Rank within East Staffordshire
East Staffordshire Borough Council runs things	35	43	↓	16 (joint)
Staffordshire County Council runs things	35	41	↓	15 (joint)

### Local Decision Making

The Government aims to build communities where individuals are empowered to make a difference both to their own lives and to the area in which they live. A key indicator of this is the extent to which people feel able to influence decisions affecting their local area. Respondents were asked if they feel they can influence decisions in their locality. Horninglow respondents are more likely to feel they can than the Borough average.

% of respondents who feel:	Horninglow	East Staffordshire	Comparison with East Staffordshire	Rank within East Staffordshire	England Average	Comparison with England
They can influence decisions in their locality	27	26	↑	11 (joint)	29	↓

### Respect and Consideration

Compared to the Borough average Horninglow respondents are less likely to score positively in the following areas:

- Parents take responsibility for the behaviour of their children – the rationale behind this question is to focus local authorities and their partners on supporting effective parenting and to take action to ensure parents are held responsible where their children behave in an unacceptable manner.
- People from different backgrounds get on well together – this measure is widely recognised as a key indicator of a cohesive society. The Local Government White Paper sets out the aim of creating strong and cohesive communities. In fact Horninglow has the lowest proportion of respondents who agree with this statement.
- People do not treat each other with respect and consideration – the rationale behind this question is to encourage local authorities and their partners to take action to promote strong communities with shared values where community members treat each other with respect and consideration.
- They have been treated with respect and consideration by local public services – local authorities are encouraged to consider this indicator in terms of narrowing gaps between perceptions for different group(s).

% of respondents who feel:	Horninglow	East Staffordshire	Comparison with East Staffordshire	Rank within East Staffordshire	England Average	Comparison with England
Parents take responsibility for the behaviour of their children	24	30	↓	13 (joint)	30	↓
People from different backgrounds get on well together	54	71	↓	21	76	↓
People do not treat each other with respect & consideration	37	29	↓	16	31	↓
They have been treated with respect & consideration by local public services	63	71	↓	17	72	↓

### Community Safety

Respondents were asked how safe they feel when outside in their local area during the day and after dark. Across the Borough those who were dissatisfied with their local area as a place to live were more likely to feel unsafe.

Horninglow respondents were less likely to feel safe after dark and during the day than the Borough average.

% of respondents who feel:	Horninglow	East Staffordshire	Comparison with East Staffordshire	Rank within East Staffordshire
Safe after dark	43	54	↓	16
Safe during the day	85	90	↓	17 (joint)

### Anti-social Behaviour

Respondents were asked to think about their local area and to say whether each of a number of different types of antisocial behaviour was a very/fairly big problem. Local authorities are the key partner in tackling ASB and have statutory duties to enforce ASB legislation. Horninglow scores negatively compared to the Borough average for all the aspects of anti-social behaviour listed in the questionnaire with the exception of abandoned or burnt out cars.

% of respondents who feel the following ASB is a problem:	Horninglow	East Staffordshire	Comparison with East Staffordshire	Rank within East Staffordshire	England Average	Comparison with England
Noisy neighbours or loud parties	27	13	↓	19	N/A	N/A
Teenagers hanging around the streets	48	41	↓	13	N/A	N/A
Rubbish or litter lying around	34	27	↓	16	N/A	N/A
Vandalism/graffiti to property/vehicles	32	26	↓	17	N/A	N/A
People using or dealing drugs	45	28	↓	17 (joint)	31	↓
People being drunk or rowdy in public	33	24	↓	17 (joint)	29	↓
Abandoned or burnt out cars	4	5	↑	13 (joint)	N/A	N/A

## Confidence in Police

Respondents were asked whether they agree or disagree that the police and other local public services seek people's views about dealing with ASB and crime in their local area. This measure is being employed as a proxy to measure confidence in local agencies to tackle the community safety issues that matter to local people. Horninglow respondents were less likely to agree with this statement (20%) than the Borough average (26%).

Respondents were then asked whether they agree or disagree that the police and other local public services are successfully dealing with ASB and crime in their local area. Horninglow respondents were less likely to agree with this statement (18%) than the Borough average (26%).

% of respondents who agree the police & other local services are:	Horninglow	East Staffordshire	Comparison with East Staffordshire	Rank within East Staffordshire	England Average	Comparison with England
Seeking people's views about dealing with ASB & crime	20	26	↓	15	25	↓
Successfully dealing with ASB & crime	18	26	↓	18	26	↓

## Additional Questions

East Staffordshire Borough Council added additional questions to the Place Survey about the local bus services. Older respondents were more likely to be satisfied with each element than younger respondents as were non disabled respondents compared with disabled respondents.

Horninglow scores above the Borough average for satisfaction in terms of all aspects of the local bus service with the exception of the state of bus stops.

% of respondents who are satisfied with:	Horninglow	East Staffordshire	Comparison with East Staffordshire	Rank within East Staffordshire
The frequency of buses	77	61	↑	4
The number of bus stops	82	76	↑	8 (joint)
The state of the bus stops	61	71	↓	16
Whether buses arrive on time	63	59	↑	7 (joint)
How easy buses are to get on & off	85	73	↑	2
The bus service overall	72	60	↑	3 (joint)

Source: East Staffordshire Borough Council Place Survey 2008/09 Snap SurveyShop

**Please ensure you quote the following source and copyright if using Census data:**

**Source:** 2001 Census Area Statistics

**Copyright:** Census output remains Crown copyright. Census output is Crown copyright and is reproduced with the permission of the Controller of HMSO and the Queen's Printer for Scotland